

CAROUSEL MEMORIES

GALA IN THE PARK

SATURDAY, MAY 14, 2016



A benefit to support the arts,
educational, and cultural programs
at Glen Echo Park.


GALA
IN THE
PARK



SILENT AUCTION HIGHLIGHTS

DETAILS & BIDDING IN THE BALLROOM LOBBY

GOLDEN TICKET FOR FREE CAROUSEL RIDES
during the 2016 Season

WASHINGTON NATIONALS "BASE HIT" PACKAGE

ONE-NIGHT STAY at The Omni Homestead Resort

IN-HOME WINE TASTING FOR 20 GUESTS
provided by Paul's Wine and Spirits

LUXURY ROUND-TRIP TRANSPORTATION TO NEW YORK CITY
with Royal Traveler

ARENA STAGE TICKETS with Valet Parking and Post-Show
Reception with Cast and Crew

THE KENNEDY CENTER BOX SEATS
with access to the Israeli Lounge

ROUND HOUSE THEATRE TICKETS
and VIP Pre-Show Reception

WOLF TRAP FOUNDATION FOR THE ARTS TICKETS
with Parking and access to the Encore Circle Lounge

ROUND OF GOLF AND LUNCH FOR FOUR
at Kenwood Golf and Country Club

MERRIWEATHER POST PAVILION CONCERT TICKETS
with VIP Access



Glen Echo Park Partnership
for Arts and Culture
and

Honorary Chairs

First Lady Catherine Leggett

Ambassador Constance Morella

Mayor Jeffrey Z. Slavin, Town of Somerset

Welcome you to

CAROUSEL MEMORIES

GALA IN THE PARK

Saturday, May 14, 2016



RECEPTION

Bumper Car Pavilion

Exhibitions

Inspiration to Completion: 2016

Popcorn Gallery

The exhibition features recent works by Glen Echo Pottery instructors and advanced students and showcases how an inspiration informs the artist's completed work. The show highlights masterworks of form, function, and sculpture, focusing on personal style and interpretation.

A Visionary's Eye: Glimpse Into Carol Trawick's Private Collection

Stone Tower Gallery

Carol Trawick is founder of The Trawick Prize: Bethesda Contemporary Art Awards and the Bethesda Painting Awards. This intimate exhibition, co-curated by Catriona Fraser, features a selection of "Best in Show" winners from these prizes (selection limited by venue configuration), along with additional work by contemporary artists from the region.

CAROUSEL RIDES

at the historic

Glen Echo Park Dentzel Carousel

DINNER AND AWARDS PRESENTATION

Spanish Ballroom

Music

Craig Gildner Jazz Trio

Celebratory Toast

Jeffrey Slavin

Honorary Gala Chair

Welcome

Jennifer A. English

President, Glen Echo Park Partnership Board of Directors

Anjali Varma, Gala Chair

Owner, Kidville Bethesda and The Modern Mompreneur

Awards Presentation

Conducted by Rebecca Cooper

Kogod School of Business at American University

Visionary Award

Carol Trawick

President, Jim and Carol Trawick Foundation

Presented by Honorary Gala Chairs

First Lady Catherine Leggett and Hon. Connie Morella

Fund-a-Need

Conducted by Michael Bobbitt

Artistic Director, Adventure Theatre MTC

DANCING

Music by the Craig Gildner Big Band

Dance Performances by DC Lindy Exchange

Carol Trawick, Honoree

Carol Trawick, President of the Jim and Carol Trawick Foundation, has been a long-time champion of the arts and nonprofits in Montgomery County. A former teacher and entrepreneur, Carol is engaged in a range of philanthropic causes through her foundation and other avenues. Created in 2007 with her late husband Jim, the foundation supports nonprofits in health and human services and the arts. As outgoing chair of the Maryland State Arts Council, Carol has overseen increases in funding and expansion of the mission, while always insisting on the highest quality programming. Carol has served on the Executive's Ball Committee, which funds arts organizations in Montgomery County, since the year the Ball was established in 1986.

Carol's work with Glen Echo Park began as a board member of the Glen Echo Park Foundation, which preceded the Glen Echo Park Partnership. In the early 2000s, as the first president of the Partnership's board of directors, Carol provided practical and thoughtful leadership at a critical time as Montgomery County took over the Park's operations from the National Park Service. She played an essential role in the successful launch of the Partnership as the new steward of the Park's arts programs and historic buildings. She was also an important advocate in securing much-needed capital funds to improve the Park.

Carol has been a powerful advocate for arts organizations and institutions in Bethesda in particular, where her family, former business, and foundation have resided for many years. She has been a major supporter of Imagination Stage, acting as visionary leader and strategic partner in addition to providing critical financial support. As chair of the board during the Strathmore Music Center's early years, Carol led the growth of the Center with purpose and vision. Her generous gift of funds launched the education program division and endowed its outreach program

over the past 11 years. The Trawick Foundation has provided close to \$350,00 in prize money for the annual Trawick Prize for Contemporary Art and the Bethesda Painting Awards, both presented by the Bethesda Urban Partnership.

Carol has served as board chair of numerous organizations, including the Bethesda-Chevy Chase Chamber of Commerce, the Bethesda-Chevy Chase Rotary Club, the Bethesda Urban Partnership, and the Bethesda Arts and Entertainment District. She was a Leadership Montgomery 2004 Leader of the Year, the Gazette 2006 Business Leader of the Year, a 2010 Washingtonian of the Year, and 2010 Montgomery County Philanthropist of the Year. In 2012, she was elected to the Montgomery County Business Hall of Fame.

Rebecca Cooper, Emcee

“Washington Business Report” creator and longtime anchor Rebecca Cooper is now Executive-in-Residence and Special Assistant to the Dean of the Kogod School of Business at American University in Washington, DC. She has worked on Capitol Hill and also as a reporter and producer with ABC News and CNN. She is the recipient of several journalism awards, including the Peabody, DuPont, Murrow, Cable Ace, and Emmy awards.

Glen Echo Park’s 1921 Dentzel Carousel

One of the most beautiful carousels in the United States, the Glen Echo Park ride was installed in 1921 by the Dentzel Carousel Company of Germantown, Pennsylvania. Dentzel carousels of the 1920s represented the height of carousel design, known for their elegantly carved and painted animals and their precision-crafted mechanisms. The carousel is one of only 135 functioning antique carousels in the country and one of the few still in its original location. Listed on the National Register of Historic Places, the carousel is truly a Washington area treasure!

Known as a “menagerie carousel” because of the variety of its animals, the Glen Echo Park carousel includes 40 horses, four rabbits, four ostriches, a giraffe, a deer, a lion, and a tiger. It also features two circus chariots. With its playful animals and striking ornamentation, the carousel has been an iconic symbol of the Park throughout the site’s amusement park years and into its current phase as an arts and cultural center.

The historic Wurlitzer 165 Carousel Band Organ that accompanies the carousel was installed in 1926. It is one of the finest sounding band organs due to the overall carousel building acoustics. The Park has a near-complete collection of recut music rolls for the organ that feature 290 songs.

The carousel’s fascinating history includes a citizen-led effort to save it from being removed from the Park. In 1970, slated to be moved to California by the current owner, the beloved carousel was remarkably spared this fate. Local citizens and organizations raised \$80,000 in one month to re-purchase the carousel so that it could remain in the Park for future generations to enjoy.

Subsequently, the Glen Echo Park Foundation secured a major private donation to restore the carousel. In 1983, Rosa Patton Ragan, a North Carolina-based artist who specializes in carousel restoration, began working on the carousel’s 52 animals and other sections, including ceiling and barrel panels and the Wurlitzer band organ front. She removed as many as 10 layers of paint before repainting each carousel animal in its initial hues. She left several small areas unfinished to reveal the original paint, providing a “window” into the past. The restoration of the carousel was completed in 2003, the canopy building and floor were finished in 2005, and the band organ was refurbished in 2007.

Each year, over 60,000 people ride the carousel, including grandparents returning to the Park with their children and grandchildren. This beautifully-restored historic ride is both the physical center and the heart of the Park! In 2016, we celebrate its 96th season.

Host Committee

Walt Bartman	Ginanne M. Italiano
Cathy Bernard	Douglas M. Jarrard
Ben Bialek	Clifford and Camille Kendall
John Bowis	Lisa Landsman
Robert G. Brewer, Jr.	Carol Leahy
Michael Burack	Marilyn Marcossan
Jonita and Dickie Carter	Tim and Leanne Mertz
Rachelle Cherol	Gail Nachman
Fred Cornelius	Thomas Natelli
Dave Dabney	Joy and Ron Paul
Peter Dean	Dick Pettit
Adrienne Dominguez	Jane Pettit
Jennifer A. English	Eliot Pfanstiehl
Starr and Fred Ezra	Dr. DeRionne Pollard
Dottie Fitzgerald	Mitchell and Emily Rales
Bonnie Fogel	Margo Reid
Bethany Frick	Bill Roberts
Carol Sue Fromboluti	Allan Stevens
Burr Gray	Anna Marie Parisi-Trone
Anna Hargrave	and Robert Trone
Andi Hedberg	Dwain Winters
Steven Hull	

Dignitaries in Attendance

Ambassador Constance Morella
Maryland Attorney General Brian Frosh
Maryland State Senator Susan Lee
Maryland State Senator Jamie Raskin
Maryland State Delegate Ariana Kelly
Maryland State Delegate Marc Korman
Montgomery County Councilmember Roger Berliner
Montgomery County Councilmember Marc Elrich
Montgomery County Councilmember Sidney Katz
Montgomery County Councilmember George Leventhal
Town of Somerset Mayor Jeffrey Z. Slavin
Town of Glen Echo Mayor Deborah M. Beers
Town of Glen Echo Councilwoman Nancy Long

Board of Directors

Jennifer A. English, President

Diana Parker, Vice President

Julie McLean, Treasurer

Rachelle Cherol, Secretary

Deborah M. Beers
Adrienne Dominguez
Philip Fabrizio
Edward S. Geier
Roy Green
Andi Hedberg
Ross McNair

Jane Pettit
Ana M. Rasmussen
Bob Reaves
Heidi Schadler
Sunil Thadani
Genevieve Twomey
Mike Zangwill

Ex-Officio Members

Hon. Roger Berliner

Kenneth B. J. Hartman

Partnership Staff

Katey Boerner, Executive Director

Meredith Forster, Education Program Manager

Debbie Mueller, Director of Development

Emily Mah Rogers, Site Operations Manager

Cheryl Fuller, Business Manager

Jenni Cloud, Marketing and Communications Associate

Janice Fischer, Registrar

Jackson Frazier, Rentals Associate

Reuven Eitan, Assistant Dance & Special Events Manager

Kim Cuthbert, Programs and Registration Assistant

Allison Mah, Exhibitions and Marketing Assistant

William Lee, Maintenance Assistant

Laurel Semple, Development & Membership Assistant

Lisa Fahlstrom, Bert Kenyon, Carousel Staff

Marlene McConnell, Kima Meidav, Sharis Simonian, Assistant Registrars

Ivi Bradley, Hannah Carter, Kima Meidav, Gallery Assistants

Thank You to Our Generous Sponsors

Benefactors (\$5,000 and above)

GEICO

Jack Hartzman Photography*

Occasions Caterers*

Washington Talent Agency*

Patrons (\$2,500-\$4,999)

Fred Cornelius

Equity One, Inc.

Cynthia and Jeff Forster

Lois Ireland and

Pierre Huggins

Natelli Communities

Susan and Edward O'Connell

Mitchell and Emily Rales

Heidi Schadler

Sanford and Doris Slavin

Foundation

Jim and Carol Trawick

Foundation

Betsy Paull and Brian Yates

Table Sponsors (\$2,000)

Bannockburn Civic

Association

Adrienne Dominguez

Folklore Society of Greater

Washington

Friday Night Dancers

Friends of the Yellow Barn

Studio

Carol Sue and

Christopher Fromboluti

Glen Echo Pottery

Jane Pettit and Robert Henkin

Andi Hedberg and

Jason Maloni

Jennifer English and

Stuart Rosenbaum

Anjali and Samir Varma

Waltz Time

Sponsors (\$1,500-\$2,499)

Bank of Georgetown

Stuart Barkley

Bethesda Communications

Group*

Cole Birches Foundation

Jeff Kincheloe

LilyPad Arts*

Ratner Companies

Greg Simon and Margo Reid

Total Wine & More*

Washington Nationals*

Friends (\$1,000-\$1,499)

Marz and Manijeh Attar

Cathy Bernard

*Bethesda Magazine**

Deb Jung and Ben Bialek

Jonita and Dickie Carter

Chevy Chase Acura

Charlotte and Peter Dean

Starr and Fred Ezra

Fitzgerald Auto Malls

Hon. Bill and Bethany Frick

Rachelle Cherol and

Eliot Goldstein

Burr and Fiona Gray

Douglas M. Jarrard

Clifford and Camille Kendall

AR Landsman Foundation

Lerch, Early & Brewer,

Chartered

Marilyn Marcossou
Montgomery College
Joy and Ron Paul
Pettit Family Charitable
Foundation
Anna Marie Parisi-Trone and
Robert Trone
Urban Alarm*
WHP Research, Inc.
Karen Wilson

Contributors (\$500-\$999)

Adeptus Partners, LLC
Adventure Theatre MTC
Associated Insurance
Management, Inc.
Edward Sharp and
Roslyn Bacon
Rosemarie and
Thomas Francis Barrett III
Donald, Deborah, and
Emily Beers
Katey Boerner
Michael and Maria Burack
Cabin John Citizens
Association
Case Design/Remodeling, Inc.
Elizabeth Lee and Jim Cole
Congressional Bank
Harriett Crosby
Susan Cummins
EagleBank
Edmonds Optician
Edward S. Geier
Marilyn and
Michael Glosserman
Anya Grundmann
Angela and Aaron Hirsch

The Irish Inn at Glen Echo
It's My Party, Inc.*
Law & Associates, Inc.
Carol Leahy
Richard Leggin
Architects, P.C.*
Jeff and Cal Leonard
Heidi and Bill Maloni
Tim and Leanne Mertz
Monument Bank
OLS Trading, Inc.
The Omni Homestead Resort*
Paul's Wine and Spirits*
Photoworks
Nat and Melissa Polito
the Puppet Co.
Ana and Jack Rasmussen*
Bob and Rita Reaves
Sarah and Robin Salomon
Cam Crockett and
Lafe Solomon
Stacey Galik and
Steven Strawn
Beth Curren and
Dwain Winters

Supporters (\$250-\$499)

AMR Commercial, LLC
Arena Stage*
Edward Lenkin and
Roselin Atzwanger
Montgomery County
Councilmember Roger Berliner
Bernstein Management
Corporation
Bethesda Co-op Natural Food
Market

Bethesda Urban Partnership
Bethesda-Chevy Chase
Rotary Club
Camille and Mark Biros
Dottie Boerner
CEGE, LLC Home Improvement
City Perch Kitchen + Bar | iPic
Theaters*
John Compton
John W. Dix
Maggie and George Eads
Phil Fabrizio
Lisa Fahlstrom
Foley Plumbing, Inc.
Friendship Hospital for Animals
Susan D. Gilbert
Glen Echo Hardware
Greenstone Landscape, Inc.
Guardian Fire Protection
Services, LLC
H Plumbing, Inc.
Honest Tea*
Constance Karageorgis
Kenwood Golf and Country Club*
Kidville Bethesda*

Manley Enterprises, Inc.
Maryland Vision Center
Mercersburg Printing*
Joan Mulcahy
Olde Towne Pet Resort*
Diana Parker
Pulse Fitness, LLC
Robin Rinearson
Royal Traveler*
Geza Serenyi
Marc A. Shepanek
Smiley Renovations, LLC
Scott Smith
Soul Cycle*
Allan Stevens
Peggy Tevis
Catherine G. Titus
Genevieve Twomey
Leigh Warner
Wild Tomato
Gail Williams
Catherine Seibert and
Fred Wright
The Young Creative Spirit

Sponsors as of May 6, 2016
**In-kind sponsors*





GLEN ECHO PARK

Glen Echo Park Partnership for Arts and Culture

About the Glen Echo Park Partnership

The Glen Echo Park Partnership for Arts and Culture, Inc. manages one of the most lively visual and performing arts sites in the Washington area. Each year, more than 400,000 people come together at Glen Echo Park to renew their creative spirit through arts classes, festivals, exhibitions, social dances, children's theater, music performances, nature programs, and more.

Established by Montgomery County in 2002, the Partnership is a nonprofit organization dedicated to managing Glen Echo Park's programs and facilities. Its mission is to present vibrant artistic, cultural, and educational offerings at the Park and to promote the Park as a unique destination for the region's diverse population.

In collaboration with Montgomery County and the National Park Service, the Partnership works with resident artists and organizations to develop distinctive arts programming. The Partnership also operates the historic Dentzel carousel, presents an extensive social dance program, produces festivals and special events, conducts fundraising and marketing, and manages and maintains all of the Park's facilities.

Award courtesy of Blair Anderson, SilverWorks Studio & Gallery
Program cover design generously provided by LilyPad Arts
Program design generously provided by Deborah Lange

The Glen Echo Park Partnership for Arts and Culture, Inc. is funded by an operating grant from the Maryland State Arts Council, an agency dedicated to cultivating a vibrant cultural community where the arts thrive, and also by funding from the Montgomery County government and the Arts and Humanities Council of Montgomery County. In addition, individual, foundation, and corporate donors generously support the Partnership. All programs are produced in cooperation with the National Park Service and Montgomery County, Maryland.

Resident Artists and Organizations at Glen Echo Park

Adventure Theatre MTC

children's theater productions and education programs

Art Glass Center at Glen Echo

fused glass studio and gallery

Glen Echo Glassworks

blown glass studio and gallery

Glen Echo Park Aquarium

a Chesapeake Bay discovery center

Glen Echo Pottery

pottery studio and gallery

J. Jordan Bruns Studio

painting and drawing studio

PGiP

Playgroup in the Park early childhood programs

Photoworks

digital and darkroom photography studio and gallery

the Puppet Co.

children's puppet shows

Sculpture Studio

a stone carving and sculpture studio

SilverWorks Studio & Gallery

silversmithing studio and gallery

Washington Conservatory of Music at Glen Echo Park

music instruction, ensembles, and performances

Yellow Barn Studio & Gallery

painting and drawing studio and gallery

Young Creative Spirit

children's fine art studio

Program Partners

American Swing Music and Dance Association – Capital Blues
Culkin School of Traditional Irish Dance
Dana Tai Soon Burgess Dance Company – Dancing by the Bayou
DC Lindy Exchange – Flying Feet Enterprises
Folklore Society of Greater Washington – Forever Dancing
Friday Night Dancers – High Energy Productions – The Jam Cellar
Metropolitan Ballet Theatre & Academy – Mystery Academy
National Enamelist Guild – Tango Brillante DC
Tom Cunningham Orchestra – Waltz Time – The Writer’s Center
and many other individual artists and arts partners

Other Programs and Activities at the Park

Visual and Performing Arts Classes and Summer Camps – sculpture, clay animation, arts and crafts, book and paper arts, dance and movement, and other disciplines

Social Dances and Classes – in the Spanish Ballroom, Ballroom Back Room, and Bumper Car Pavilion co-produced by the Partnership and a host of presenters

Festivals – Family Day, Washington Folk Festival, Then and Wow, and more

Summer Concert Series – Thursday evenings in the Bumper Car Pavilion from June through August

Art Exhibitions – in the Popcorn Gallery, Stone Tower Gallery, Park View Gallery, and other venues throughout the year

Park History Tours and Programs – in cooperation with the National Park Service

Dentzel Carousel – open May through September

Children and Family Activities – Art Explorers drop-in arts activities and birthday parties

Environmental Education Programs – presented by the Glen Echo Park Aquarium, a program of Under the Sea

Playground and Picnic Area – open year round

The Glen Echo Park Partnership for
Arts and Culture Offers
Special Thanks to Our
Generous Major Sponsors

O C C A S I O N S



C A T E R E R S

GEICO®
geico.com



Jack Hartzman
PHOTOGRAPHY



O C C A S I O N S



C A T E R E R S

OCCASIONSCATERERS.COM

202.546.7400

OCCASIONS CATERERS IS PROUD TO
SUPPORT GLEN ECHO PARK AND
THE CAROUSEL MEMORIES
GALA IN THE PARK



KIDS
HEADSHOTS
PROFESSIONAL
FAMILIES
SOCIAL MEDIA

JACK HARTZMAN PHOTOGRAPHY
301.762.1800



GLEN ECHO POTTERY

a year-round pottery school



2016

MAY 14 - JUNE 12

INSPIRATION TO COMPLETION

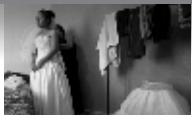
Spring Ceramics Exhibit
in the Popcorn Gallery
Open this Evening

• Beginner, intermediate and advanced
classes, generous open studio time
Jeff Kirk, Executive Director and Resident Artist
301-229-5585 • www.glenechopottery.com

PHOTOWORKS

At Glen Echo Park

40+ YEARS IN FOCUS.



- Digital and film photography classes and workshops.
- Exhibits & gallery talks.
- Open darkroom & digital lab.
- Join our community of photographers.

PHOTOWORKS PHOTOGRAPHY SCHOOL & GALLERY

7300 MacArthur Boulevard

Glen Echo, MD 20812

301.634.2274 | www.glenechophotoworks.org



Walter Bartman, Founder and resident artist

The Friends' philosophy, consistent with the spirit of the late 19th Century Chautauqua movement upon which Glen Echo Park was founded, is that art is universal and thus should be accessible to all. The Friends' goal is to encourage all area residents of all ages and all means to experience the wonder of the visual arts, through Drawing and Painting.



yellowbarnstudio.com



Salutes
CAROL TRAWICK
For her support of the Arts

Congratulations GEPPAC!

*Thank you for 45 wonderful years as
the resident children's theatre
in Glen Echo Park!*





Congratulations, Carol!
Thank you from all
your friends at...

A Center for Exploration of the Puppet Arts

the Puppet Co.

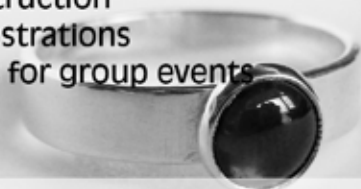
silverWorks
studio  gallery
at glen echo park

in the studio

- 5 week classes in silversmithing
- one day workshops
- open studio rental
- private instruction
- live demonstrations
- workshops for group events

in the gallery

- ongoing shows
of new work
- original jewelry
creations for sale



www.silverworksglencechopark.com

*Glen Echo Park is a treasure,
a cultural and arts icon.
Thank you for enriching
our County!*



Councilmember Roger Berliner

District 1

Paid for by Friends of Roger Berliner
Barbara Goldberg-Goldman, Treasurer



The Young Creative Spirit

**Let your
imagination soar!**

Afterschool Classes
Fine Art and Studio Camps
Parent and Child Classes
and Workshops

www.youncreativespirit.org
301.980.1538

The folklore Society
of Greater Washington



*Furthering the understanding,
investigation, appreciation,
performance, and enjoyment of
traditional folk music, dancing and
storytelling of the American people*

- Join us for concerts, dances, festivals, getaways, open sings, jams, storytelling events, and more
- Read all about DC-area folklore news in the FSGW monthly newsletter and weekly e-mail blasts
- Enjoy the FSGW contra dances every Sunday at Glen Echo Park, 7:30 to 10:30 pm, with free lesson at 7pm

36th Washington Folk Festival, June 4 & 5, 2016

www.fsgw.org
www.facebook.com/DCFolklore/

CONTRA DANCING

Wonderful live music
Come alone or with friends
Alcohol- and smoke-free



Friday
Night
Dancers

All dances taught and prompted
No experience necessary
Casual dress
Wear comfortable shoes

What: Contra dancing is an American form of traditional social dance related to square dancing. It's fun, friendly, energetic, and easy to learn!

Where: Glen Echo Park – Spanish Ballroom

When: Every Friday night, **8:30 to 11:30 p.m.** *New dancer lesson at 7:30 p.m.*

Cost: Admission (*includes lesson*): **\$10** for adults, **\$5** for age 17 & under.

Free admission for 17 & under on the second Friday of every month.

New dancers get free admission coupon for their next dance.

Questions? Go to www.fridaynightdance.org and **Friday Night Dance at Glen Echo Park** on Facebook, write to info@fridaynightdance.org or phone GEPPAC at **(301) 634-2222**.

Sponsored by The Friday Night Dancers in cooperation with GEPPAC,
the National Park Service, and Montgomery County

EVERY FRIDAY NIGHT

Waltz Time at Glen Echo Park

Sunday Afternoon Waltzes in the Spanish Ballroom
Lesson and Dancing to Live Music

Since 1995 **Waltz Time**, an all-volunteer group of dancers, has produced the twice-monthly Sunday afternoon waltzes and the annual "Evening with Strauss Waltz Ball" at Glen Echo Park.

Each Sunday afternoon dance includes a beginning waltz lesson from 2:45 - 3:30 pm, followed by dancing until 6:00 pm to live music by renowned local and national bands. We invite you to join this lively community of waltzers. We know that you will have a great time!

2016 Waltz Schedule

May 15: Karen Axelrod & Friends
May 29: Swallowtail
June 12: Gigmesters - 50/50 Waltz:Swing
June 26: Waltzing Stars
July 3: Let's Play Three
July 17: Addison Bleufonte
Aug. 7: Waltz Magic
Aug. 21: Waverley Station
Sep. 4: Honeysuckle Rose
Sep. 18: Some Assembly
Oct. 2: Go Figure
Oct. 16: Sugar Beat
Oct. 30: Avant Gardeners
Nov. 6: Maivish
Nov. 20: Trio Con Brio
Dec. 4: Green Light Karma
Dec. 18: Gigmesters



www.waltztimedances.org



LilyPad Arts is a boutique graphic design studio run with a shared passion for design, stationery, and all things paper. We understand the importance of both work and play, and offer a wide range of products and services to suit both. Whether you need creative, eye-catching materials for your large or small business, or a fresh look for your next social occasion, we're ready to help!

www.LilyPadArts.com



*Congratulations to the
Glen Echo Park Partnership
on the 2016 Gala!*

**Bethesda
Communications
Group**



**Publishers of Books,
Brochures, and Films**

See our books in the Popcorn Gallery.
www.bcgpub.com



**The Bannockburn Civic Association
is Proud to Sponsor
The GEPPAC Gala 2016**

**Bannockburn:
Less a Place
than a
State of Mind**

www.bannockburncommunity.org

Cabin John Congratulates You!



**Cabin John residents are a fun crowd and
have always appreciated the opportunities
that lie across the bridge in Glen Echo Park.**

Congratulations & Thank You Carol Trawick

for your many outstanding contributions to the arts in Bethesda!



Bethesda Urban Partnership
Bethesda Arts & Entertainment District

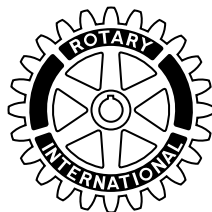


Congratulations to

Carol Trawick

on receiving the Visionary Award
from

The Bethesda-Chevy Chase Rotary Club



*The Trawick Foundation joins
Glen Echo Park
in celebrating the
Glen Echo Park Carousel!*

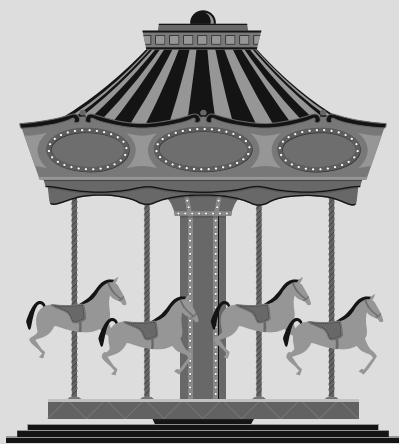


JIM AND CAROL
TRAWICK
FOUNDATION

GEICO[®]
is honored to support

Glen Echo Park Partnership
for Arts and Culture
**2016 Carousel Memories
Gala in the Park**

**Congratulations to Honoree
Carol Trawick, President
Jim & Carol Trawick Foundation**



GEICO[®]
geico.com | 1-800-947-AUTO (2886).

Some discounts, coverages, payment plans and features are not available in all states or all GEICO companies. GEICO is a registered service mark of Government Employees Insurance Company, Washington, D.C. 20076; a Berkshire Hathaway Inc. subsidiary. GEICO Gecko image © 1999-2016. © 2016 GEICO

Congratulations
Community "Angel" Carol Trawick
an outstanding philanthropist
for Montgomery County

Jeffrey Z. Slavin Co-Director
Roni Slavin Pekins Co-Director

Sanford & Doris
SLAVIN Foundation



Natelli Communities Brings You
Bethany's Best Selling Community

BayForest
at Bethany Beach

NVHOMES

Single Family Homes from \$337,990

Villas from \$279,900

302.539.2128

MAIN STREET HOMES

Lake Front Single Family Homes

From \$413,900

302.539.6278



www.BayForestBeach.com





Proud sponsor of the
Gala in the Park 2016



410 Park Avenue | Suite 1220 | New York, NY 10022
1600 NE Miami Gardens Drive | North Miami Beach, FL 33179
NYSE:EQY | equityone.com



ROOTED IN TRADITION. GROWING THROUGH SUCCESS

Burt Wealth Advisors is proud to honor
Carol Trawick
and support the Glen Echo Park Gala

For over 30 years, Burt Wealth Advisors has placed a personal relationship with our clients at the center of each engagement. We bring our proven expertise to bear on every aspect of a client's wealth - from accumulation and growth through preservation, distribution and charitable giving.

To learn more about how we can work together, please contact our offices at 301-770-9880. You can also view our website at www.burtwealth.com.



Classes • Birthday Parties • Boutique • Playspace • and More!

Kidville Bethesda is the One-Stop Shop for Families—Kids Classes, Birthday Parties, Haircuts and More!

- Art, music, dance, camp, gym, and enrichment classes for newborn–6 years old
- Legendary birthday parties for children aged 1-8
- Haircuts in the Kidville Salon
- Indoor Playspace

Visit www.Kidville.com/Bethesda or give us a call
at 301-656-5030 for more details!

SHULMAN
ROGERS

GANDAL
PORDY
ECKER

Proud to Volunteer as General Counsel to Glen Echo Park Partnership for Arts and Culture

Jeffrey S. Holik

Larry A. Shulman

Shulman, Rogers, Gandal, Pordy & Ecker, P.A.

12505 Park Potomac Avenue

Potomac, Maryland 20854

301-230-5200

ShulmanRogers.com

To us, banking means community.



Your goals become our goals, and you can rest assured-
at Bank of Georgetown, we're pulling for you.



www.bankofgeorgetown.com | 202-355-1200
Serving Businesses & Families in DC | MD | VA

Proud Sponsor of Glen Echo Park



Member FDIC



RATNER[®]
COMPANIES

where it's all about the people.[™]

Proudly Supporting

Glen Echo Park Partnership
for Arts and Culture's

Gala in the Park

hair cuttery

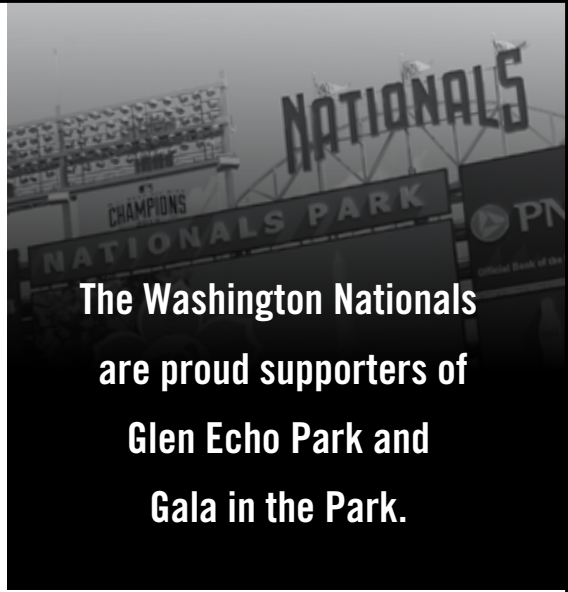
BUBBLES

Salon Cielo

cipu

SALON PLAZA[®]

**FROM OUR
PARK TO
YOURS...**



**The Washington Nationals
are proud supporters of
Glen Echo Park and
Gala in the Park.**

nationals.com

Bethesda
MAGAZINE

Bethesda Magazine
is a proud supporter of the
Glen Echo Park Gala



Our food and drink
issue is now
available on
newsstands



18205D Flower Hill Way, Gaithersburg, MD 20879 • 301-975-1020 • Fax: 301-670-9259

*Pettit Family Charitable Foundation
is proud to be a sponsor of
Glen Echo Park Gala!
Congratulations to Carol Trawick for your
continued community dedication!*

Richard B. Pettit, Chair/Trustee
J. Stephen Pettit, Trustee
Barbara L. Pettit, Trustee
Jeanne M. Pettit, Trustee
Carol Ann Fahrner, Trustee

**Fitzgerald Auto Malls is Proud to Support
Carousel Memories Gala in the Park
Congratulations to Honoree
Carol Trawick**



***Fitzgerald* AUTO MALLS**
FitzMall.com Always Low Price Since 1966

www.FitzMall.com

Rockville • White Flint • Gaithersburg • Wheaton
Germantown • Annapolis • Lexington Park • Frederick

Congratulations to Our Good Friend Carol Trawick!



THE EZRA COMPANY Commercial Real Estate Services
DC | MD | VA
info@ezracompany.com | www.ezracompany.com

EZRA

Exclusively Tenant Focused

Unparalleled Expertise. Unwavering Focus. Unequaled Results.

Congratulations, Carol!

Thank you for all you do for our community.



Love,
Your fan club - Bill and Bethany Frick

Montgomery College

Proud sponsors of the 2016 Gala in the Park

Much like Glen Echo, we have provided unique educational and cultural opportunities to Montgomery County residents for many years.



LERCH
EARLY &
BREWER

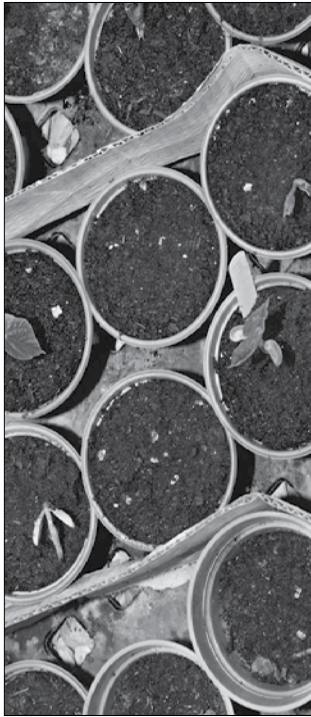
The Attorneys of
Lerch, Early & Brewer
congratulate
Carol Trawick
on being honored at the
2016 Gala in the Park!

With special acknowledgment of the efforts of the
Glen Echo Park Partnership for Arts and Culture.

Attorneys at Law

3 Bethesda Metro Center, Suite 460 Bethesda, MD 20814
(301) 347-3758 | www.lerchearly.com

ideas that work



Carol Trawick

Because you
support so many
we're honored
to support you.

Douglas M. Jarrard, CFA®
Portfolio Manager
Senior Vice President
Financial Advisor

702 King Farm Blvd. Suite 500
Rockville, MD 20850
301-556-2320
douglas.m.jarrard@ms.com
www.morganstanleyfa.com/threeoaks

It takes more than money to make our world stronger. It takes the efforts of people like Carol Trawick, who give their time and talents to help the community. Three Oaks Wealth Management of Morgan Stanley salutes you.

Morgan Stanley

© 2013 Morgan Stanley Smith Barney LLC. Member SIPC.

CRC588389 (12/12) 7338769 SUP029A 04/13



Merrill Lynch

**Marcosson Kaufman & Kast
Global Wealth Management**

1152 15TH STREET NW
Suite 6000
WASHINGTON, DC 20005
Phone: (202) 659-6070

**We are a proud sponsor of
Glen Echo Park Partnership!**



Providing Marketing Research with
Wisdom, **H**onesty, and **P**recision

contact@whpresearch.com
301-986-1824
www.whpresearch.com

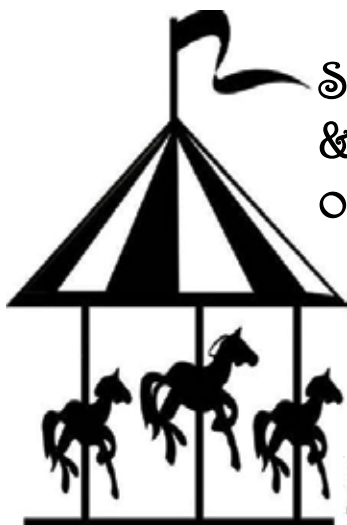
**Pleased to provide peace of mind and security
for Glen Echo Park Partnership**



**URBAN
ALARM**
TOTAL PEACE OF MIND

www.urbanalarm.com

Security and Fire Alarm • Video • Access Control • Mobile Patrol



Saluting Carol Trawick
& Sharing Fond Memories
of our Carousel!



MD | DC | VA | 301.986.1800
EAGLEBANKCORP.COM



INCREDIBLE SELECTION • GREAT CUSTOMER SERVICE • LOWEST PRICES

Total Wine[®]
& MORE

PROUD
SUPPORTER
OF THE GLEN
ECHO PARK
PARTNERSHIP



Total Wine[®]
& MORE

www.totalwine.com



Visit one of our 14 Virginia Wine Superstores

MCLEAN | ALEXANDRIA | SPRINGFIELD | FAIRFAX | CHANTILLY | STERLING
MANASSAS | FREDERICKSBURG | W. RICHMOND | S. RICHMOND
NEWPORT NEWS | NORFOLK-GHENT | VIRGINIA BEACH | CHESAPEAKE

MONUMENT BANK

Proudly Supports the
2016 Glen Echo Park Gala

Monument Bank applauds the efforts of Glen Echo Park as a vibrant cultural resource in the Washington, DC area.

As a leading community bank, we make a difference to the communities where we live and work.



LEADERS IN COMMUNITY BANKING

monumentbank.com

301.841.9600

Bethesda | Rockville | Silver Spring

Member FDIC
NMLS ID #409012



Celebrating 250 Years as America's First Resort



theomnihomestead.com
800-838-1766



is honored to support the 2016 Glen Echo Carousel Memories Gala in the Park.

Congressional Bank has been serving the local community for over 10 years.
Contact us today for exceptional service, great deposit accounts,
commercial loans and residential mortgages.

(301) 299-8810 or customerservice@congressionalbank.com

Please visit our website at www.congressionalbank.com
to find a branch near you.



NMLS ID #652644

+ MORE THAN JUST REMODELING



**MORE MEANS GREATER
QUALITY, EXPERTISE & VALUE.**

With more than 50 years of transforming homes in the
Glen Echo area, Case offers the highest quality in design
and craftsmanship, unbeatable client service and the best
warranty in the business. Visit casedesign.com or call
703.241.2980 to schedule a free consultation.



Moving? Need Decommissioning or Liquidation?



Scott Cornblatt

President

301-296-3104

scottc@olsgogreen.com



**Environmentally and socially responsible
end of lease decommissioning services:**

- Liquidation of furniture & fixtures
- Removal of MEP, AV, and IT equipment
- Cable abatement
- Wall patching
- Ceiling tile replacement
- Trash disposal
- Broom sweeping
- Lease-end consultation

Visit us at www.olstrading.com!

Edmonds

O P T I C I A N

A Tradition of Excellence Since 1898
Specializing in children and adult eye care

The Shops at Sumner Place
4611-B Sangamore Road
Bethesda, MD 20816

301-229-3775
www.edmondsoptician.com

Law & Associates Inc.
Independent Registered Investment Advisor



Wealth Management & Financial Planning

(301)229-8500

Heather Cottage
6111 Tulane Avenue
Glen Echo Maryland 20812-1205
www.lawandassociates.com

Securities offered through Raymond James Financial Services, Inc.
Member FINRA/SPIC



**RICHARD
LEGGIN**
ARCHITECTS



301-320-0107

RLArchs.com



Adeptus Partners, LLC
Accountants | Advisors
3311 Olney Sandy Spring Road
Olney, Maryland 20832
Phone: 301.929.9700
Fax: 301.929.9701

www.AdeptusCPAs.com

Adeptus Partners, LLC is a proud sponsor of
Glen Echo Park Partnership for Arts and Culture.

Our experienced accounting, tax and consulting professionals are committed to supporting your business and financial objectives with quality service and responsiveness that will exceed your expectations.

SERVICES: Tax Planning & Preparation • QuickBooks Set-up, Consulting & Training • Audits, Reviews & Compilations • Monthly Reporting Services • Consulting in Purchase or Sale of Business
• Estate & Succession Structure & Planning • Restaurant, Real Estate & Retail Specialists

Present this ad and save 15% off your next wine purchase*

If you want a great selection at the competitive pricing of a national retailer, with the one-on-one attention from any one of our dedicated wine consultants, then look no further than Paul's. Conveniently located between downtown Washington and the Beltway near Mazza Gallerie, we offer free garage parking to customers and easy access to the Red Line Metro at Friendship Heights. Whether helping you plan for a special event or guiding you to the perfect wine to celebrate a cherished occasion, let 30 years of a family owned and operated business remind you what customer commitment is all about.

*Minimum purchase of \$75, limit 1 per customer, cannot combine with other discounts, does not apply to wines on sale. Valid through July 1, 2016.



5205 WISCONSIN AVE NW WASHINGTON, DC 20015

(202) 537-1900 - INFO@PAULSDC.COM - [HTTP://WWW.PAULSDC.COM](http://WWW.PAULSDC.COM)



Associated Insurance Management is a full-service, independent property & casualty insurance agency, specializing in commercial and residential real estate in the Metropolitan Washington, DC area.

Contact: Bruce Feinman

240-638-4073

bbfeinman@aimcommercial.com

Associated Insurance Management, Inc.

1300 Spring St., Suite 300

Silver Spring, MD 20910



I.M.P. PRESENTS

Merriweather Post Pavilion • Columbia, MD

GV/FRANK PROD. PRESENT

Cage The Elephant w/ Portugal. The Man & Broncho..... MAY 15

Kenny Chesney w/ Old Dominion..... MAY 19

CAPITAL JAZZ FEST FEAT

NEW EDITION • EN VOGUE • TONI BRAXTON and more!..... JUNE 3-5

Ellie Goulding w/ Matt and Kim..... JUNE 13

Tame Impala w/ M83..... JUNE 16

Chris Stapleton & Jason Isbell w/ Frank Turner and the Sleeping Souls..... JUNE 18

DC101 KERFUFFLE FEATURING

blink-182 • Silversun Pickups • Cold War Kids and more!..... JUNE 26

ALL GOOD PRESENTS MERRYLAND MUSIC FEST FEATURING

THE STRING CHEESE INCIDENT • BEN HARPER & THE INNOCENT CRIMINALS and more!..... JULY 9 & 10

Modest Mouse / Brand New..... JULY 12

VANS WARPED TOUR PRESENTED BY JOURNEYS FEATURING

FALLING IN REVERSE • ISSUES • FOUR YEAR STRONG and more!..... JULY 16

Brandi Carlile & Old Crow Medicine Show w/ Dawes..... JULY 23

SUMMER SPIRIT FESTIVAL FEATURING

Jill Scott • Erykah Badu • The Roots and more!..... AUGUST 6 & 7

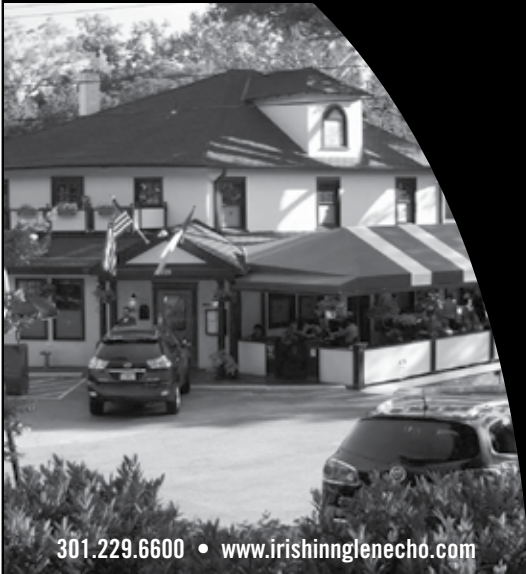
Shinedown w/ Halestorm • Black Stone Cherry • Whiskey Myers..... AUGUST 10

Train w/ Andy Grammer..... AUGUST 20

Miranda Lambert w/ Kip Moore & Brothers Osborne..... AUGUST 25

The Lumineers w/ BØRNS & Rayland Baxter..... SAT SEPTEMBER 10

ticketfly • For full lineups and more info, visit merriweathermusic.com • 930.com



301.229.6600 • www.irishinnglenecho.com

the irish inn



*fine dining
at glen echo*

live music

*mondays - traditional irish
7 pm - 10 pm*

*every other wednesday
19th street band
8 pm - 11 pm*

*sundays - jazz
5:30 pm - 8:30 pm*

*6119 Calane Ave. Glen Echo
Maryland 20812*

BERNSTEIN

MANAGEMENT CORPORATION

Founded by Norman Bernstein in 1953, Bernstein Management Corporation has been a regional leader in real estate management, investment and development.

Bernstein Management | Building on 60 Years

Bernstein Management Corporation
5301 Wisconsin Avenue, Suite 600
Washington, DC 20015
p (202) 363-6301

ART • CUSTOM • REPAIRS • IN HOME

RAINBOWNEON, INC.

TEXT- 301-989-9242 -CALL

Broken Bar/Beer Sign?

Need a unique gift?

Store Sign need repair?

www.rainbowneon.com
kelly@rainbowneon.com

- Apparel
- Neon
- Printing
- Graphics
- Banners
- Signs



 Wild
tomato
is Wild
about
Art
in the
Park!



FRIENDSHIP
HOSPITAL FOR ANIMALS

Comprehensive wellness,
emergency and specialty care



202.363.7300

+24 hour urgent care

Located in Tenleytown with
client parking.

www.friendshiphospital.com



Home Improvement

Commercial and Residential

Eddie Juarez

3 Hillcrest Drive, Suite 202-A
Frederick, MD 21703

Office: 301-360-0590
Cell: 301-536-4184

cegellc@aol.com

www.cegehomeimprovement.com

MHIC# 125245

Bethesda Co-op Natural Foods



Proud Supporter of **Glen Echo** *Gala in the Park*

Organic Natural &
Gourmet Food for
over **40** years!

bethesdacoop.org 301 320-2530
6500 Seven Locks Rd MacArthur Plaza Cabin John



Mercersburg
PRINTING

- Quick Turnaround
- Friendly Service
- Professional Staff
- Fast and Reliable
- Quality Equipment

- Commercial Printing
- Digital Printing
- Mailing Services
- Graphic Design Services
- Web Design & Hosting

800-955-3902

Fax: 717-328-4138

9964 Buchanan Trail West
Mercersburg, PA 17236

www.mercersburg.net
mprint@planetcable.net

"Someone nice will always answer!"



FOLEY PLUMBING INC.

Residential and Commercial
Licensed/Insured

**Family Owned
and Operated
For 25 Years!**

WSSC #41108

301-681-8068

www.FoleyPlumbingInc.com

Service Repairs

New Installations

Remodels

Hot Water Heater Replacement

Main Drain and Secondary Drain

Cleaning

Call Today!



PULSE FITNESS

Inhale. Exhale. Play.

Full-Service Fitness Facility Offering:

Two Full Pilates Studios

Personal Training

Group Exercise

Indoor Cycling

Children's Programming

Massage

**Mention Glen Echo and Receive
a Special First Time Rate!**

www.pulsefitnessbethesda.com

5110 Ridgefield Rd., Suite 410

Bethesda, Md. 20816

301-656-0500

Honest

Real brewed, organic tea



© 2015 Honest Tea, Inc. All rights reserved.



GUARDIAN FIRE PROTECTION SERVICES

Single Source / Simplicity / Peace of Mind

**Fire Alarm – Sprinkler – Extinguisher
Kitchen Fire Suppression**

Inspection – Repair – Emergency

Servicing: MD, VA and DC

Ph: 301-840-7100

www.GuardianFireProtection.com

GLEN ECH ⊕ HARDWARE

POWERING YOUR PROJECT

Authorized Distributor of
Makita • Paslode • Fein
Benjamin Moore Paints

**7303 MacArthur Blvd.
Bethesda, MD 20816
301-229-3700**

www.glenechohardware.com

ROYAL TRAVELER



Your commute just got an upgrade

Departing & Returning twice
daily between DC & NYC

**For Reservations
please visit**

www.royaltraveler.com

or call us at 202-590-0506



QUALITY CRAFTSMANSHIP

Since 1973

Certified Green Remodeler on Staff

Client Satisfaction: Our best product!
For over 35 years

Member of "Big 50"

Phone 301-320-4381
Fax 301-320-5379
6320 Bannockburn Dr.
Bethesda, MD 20817
jim@manleyenterprise.com



We truly believe that being an outstanding design/build company means providing quality designs with true craftsmanship, while placing the client's satisfaction above all else. We invite you to experience a company culture that is built around these core values.

Design-Build
www.smileyrenovations.com
301.674.7879



Serving Glen Echo and
Surrounding Areas

Service Repairs and
Installations

Remodeling Work

Gas Fitting & Backflow
Certified



301-253-1133
www.hplumbinginc.com



Where Landscaping Dreams take Root...

Landscape & Design,
Installation and Maintenance



(301) 869-0100
www.Greenstone1.com

Art Explorers Family Studio
Saturdays 10:00am-12:30pm

PGiP
Playgroup in the Park



Join us every Saturday for Art Explorers Family Studio

WHAT: Parent/Child Drop-in Art Activities

WHEN: Every Saturday morning, 10am to 12:30pm, in the Candy Corner studio

WHO: For kids ages 10 and under with an adult

Activities change weekly. Drop in for a 1/2 hour of activity.
No pre-registration; \$10 per child.

Presented by Playgroup in the Park (PGiP) and the Glen Echo Park Partnership.

2016 ACURA TLX

Driving memories!
Make them yours.



www.ChevyChaseAcura.com

MDVISION CENTER

MEDICAL & SURGICAL EYE CARE



Sunil Thadani, M.D., F.A.C.S.
Eye Surgeon, Cornea Specialist
Board Certified Ophthalmologist
(240) 575-9580



Creativity Today
Innovation Tomorrow

Dear Carol,

Thanks for being the
Wind Beneath Our Wings.

Bonnie Fogel
and Imagination Stage

*Congratulations
Carol*

From your
Strathmore Family



Jim Morris

STRATHMORE

With Deep Gratitude
We Congratulate and
Appreciate

Past Chamber President
Carol Trawick
for Making Such a
Difference in our Community!



The Greater Bethesda
Chamber of Commerce
*Celebrating 90 years of
doing business in the
Greater Bethesda community*



PROUDLY SUPPORTS GEPPAC
AND THE 2016 GALA IN THE PARK,
"CAROUSEL MEMORIES"
HONORING CAROL TRAWICK

**CAROL, YOU ARE
THE BEST!**

For all your
commercial real estate needs,
call Jack Alexander

3 0 1 . 9 6 1 . 9 6 9 6

AMR COMMERCIAL, LLC.

www.amrcommercial.com
jalexander@amrcommercial.com
4849 Rugby Avenue ♦ Suite 200
Bethesda, Maryland 20814
301.961.9696 ♦ Fax 301.656.7551

Praline at Glen Echo Park



Located Next to the Ballroom
Now Serving Beer and Wine

Monday-Wednesday, 10am-4pm
Thursday-Sunday, 10am-10:30pm



Every First Friday
May - September
6pm to 8pm



IN THE PARK

Every first Friday, May through September, the Glen Echo Park Partnership hosts open studios and artist demonstrations in the Park's many visual arts studios and galleries.

Each month features different activities.

www.glenechopark.org/artwalk



GLEN ECHO PARK

2016

SUMMER concerts

Thursdays, June 9-August 25

7:30pm in the Bumper Car Pavilion

Covered pavilion with seating. Rain or shine.
Bring a picnic or visit Praline at Glen Echo Park.

FREE Music • FREE Parking

JUNE

- 9 Washington Conservatory Encore Chorale & Encore Rocks Glen Echo
- 16* Peabody Ragtime Ensemble*
- 23 VERGE Ensemble
- 30* Back Porch Blues*

JULY

- 7 The Rock & Roll Relics
- 14* U.S. Marine Jazz Combo
- 21 Dave Kline Band
- 28 Hit the Roof

AUGUST

- 4 Trifilio Tango Trio
- 11 Brian Gaffney
with opening act Elle Hope
- 18* Dave Chappell & Friends featuring Anthony Pirog
- 25 The Montgomery College Jazz Ensemble

*Special member giveaways nights

FAMILY JAZZ DAY SUNDAY, JULY 17

3:00-7:00pm

Featuring the
U.S. Navy Band
Commodores,
Blues Alley Youth
Orchestra, and other
youth jazz bands!

www.glenechopark.org • 301-634-2222



*Concerts presented with support from a Touring Artist Grant from the Maryland State Arts Council.

The Partnership also thanks The Bethesda Chevy Chase Rotary Club Foundation for their generous support of the Summer Concert Series.

The Glen Echo Park Foundation, an all-volunteer organization, is a 501(c)(3) nonprofit organization. It is a member of the National Association of Public Gardens and Botanic Gardens. The Foundation is a 501(c)(3) nonprofit organization. It is a member of the National Association of Public Gardens and Botanic Gardens. The Foundation is a 501(c)(3) nonprofit organization. It is a member of the National Association of Public Gardens and Botanic Gardens.



GLEN ECHO PARK

Glen Echo Park Partnership for Arts and Culture

7300 MacArthur Boulevard, Glen Echo, MD 20812
301.634.2230 • www.glenechopark.org

