

# CELEBRATE HISTORY IN OUR BACKYARD

## Gala in the Park

Saturday, May 20, 2017

# GLEN ECHO PARK



A benefit to support the arts,  
educational, and cultural programs at  
Glen Echo Park





## SILENT AUCTION HIGHLIGHTS

### DETAILS & BIDDING IN THE BALLROOM LOBBY

Southwest Airlines Travel Vouchers

Walt Disney World Park Hopper Tickets

The Kreeger Museum Private Tour and Membership

Barnes & Noble Book Club Package

Luxury round-trip transportation to New York City  
with Royal Traveler

Round of golf and lunch for four  
at Kenwood Golf and Country Club

Lettuce Entertain You Restaurant Certificates to Mon Ami Gabi,  
Summer House Santa Monica, and Stella Barra Pizzeria

Private Wine Tasting with Total Wine & More

Theater and Performance Tickets with Merriweather Post  
Pavilion, Strathmore, Wolf Trap, Round House Theatre,  
Arena Stage, Ford's Theatre, and the Cathedral Choral Society

Hotel Stays with Hilton Worldwide, Hyatt Regency  
Bethesda, and Bethesda Marriott Suites





Glen Echo Park Partnership for Arts and  
Culture

Welcomes you to the

CELEBRATE HISTORY  
IN OUR BACKYARD  
Gala in the Park



Saturday, May 20, 2017

# **DINNER AND AWARDS PRESENTATION**

Spanish Ballroom

## **Dinner Music**

Tom Cunningham Jazz Trio

## **Celebratory Toast**

Judy A. Greenberg  
Honorary Gala Chair  
Director, The Kreeger Museum

## **Welcome**

Rachelle Cherol  
President, Glen Echo Park Partnership Board of Directors

## **Awards Presentation**

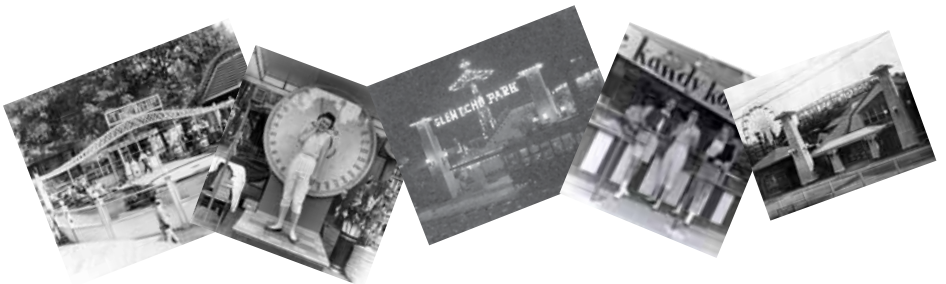
Conducted by Barbara Harrison  
NBC4 Washington

## **Special Recognition**

Richard Cook  
Honorary Park Historian  
Presented by Elisabeth Kaplan

## **Friend of Glen Echo Park Award**

Town of Glen Echo  
Presented by Councilmember Roger Berliner



## **Visionary Award**

Yumi Hogan

First Lady of Maryland

Presented by Ambassador Connie Morella

## **Spanish Ballroom Fund-a-Need**

Conducted by Robin Cunningham and Ellen Engle

## **DANCING**

Music by The Tom Cunningham Orchestra

Dance Performances by Jam Cellar

## **EXHIBITIONS**

### ***Glen Echo Pottery: Vessels Great and Small 2017***

featuring recent works from instructors and advanced students  
Popcorn Gallery

### ***The Homecoming: Six Artists Return to Glen Echo Park***

Rhoda Baer, Henry Barrow, Carol Barton, Raya Bodnarchuk, Jim  
Sanborn, and Tom Wolff  
Stone Tower Gallery

## **CAROUSEL RIDES**

at the historic  
Glen Echo Park Dentzel Carousel



## **Richard Cook, Honorary Park Historian**

Richard Cook's interest in the history of Glen Echo began in the mid 1960s when he and a friend excavated several areas around the town in search of artifacts. He began seriously researching Glen Echo Park history in the early 1970s shortly after the amusement park closed. His collection of Glen Echo photographs and documents has been an important tool for researchers documenting the history of the Park. Cook is the author, with Deborah Lange, of *Glen Echo Park: A Story of Survival*. The book is "a photo history of how a fabled Chautauqua and legendary amusement park became a thriving arts colony." The Richard Cook Collection of materials documenting the Park's early history as a Chautauqua and an amusement park is housed at the George Washington University Library. Highlights include press articles from 1911 through the 1950s.

## **Town of Glen Echo, Honoree**

Glen Echo began in 1889 when two brothers, Edwin and Edward Baltzley, purchased land along the Potomac River from Cabin John Creek in Maryland to the Walhonding Road area and named it Glen-Echo-on-the-Potomac. They referred to the area as "The Washington Rhine." The Town of Glen Echo was incorporated in 1904 and originally included Glen Echo Park and the historic Clara Barton House. Today Glen Echo Park and the Clara Barton House are owned by the National Park Service.

In 1891 the Baltzley brothers deeded 80 acres of their land to the Chautauqua Association, and on June 16, 1891, the National Chautauqua of Glen Echo became the 53rd Chautauqua Assembly. Although initially a huge success it closed one year later due to rumors about malaria in the area. In 1899, new investors in Glen Echo formed The Glen Echo Company and advertised "amusements for the young and old," putting in a merry-go-round, a bowling alley, a band pavilion, and picnic grounds. After the Glen Echo Amusement Park closed in the late 1960s, a new era began - with Glen Echo Park returning to its roots as a cultural center.

The Town has supported Glen Echo Park with contributions and volunteer leadership for many years. Town leaders organized the

efforts to save the Dentzel Carousel by raising funds to purchase it from the collector who bought it when the amusement park closed. Many residents have been involved in both programmatic and fundraising efforts at the Park, as well as documentation of the interconnected history of both the Town and the Park. The Town has a representative serving on the Partnership's board of directors ensuring communication and a strong partnership.

### **Yumi Hogan, Visionary Award**

First Lady of Maryland Yumi Hogan is a first-generation Korean-American, an accomplished artist, and an adjunct professor at Maryland Institute College of Art. Her artwork, created on traditional Hanji paper with Sumi ink and mixed media, has been featured in art shows and museums in Maryland, Virginia, the District of Columbia, South Korea and more, including an exhibit at the National Museum of Women in the Arts. In addition to her work as an artist, Mrs. Hogan has juried numerous art exhibitions, including statewide and national competitions by the Maryland Federation of Art.

As First Lady, Mrs. Hogan has made it a priority to share her love of the arts with Marylanders of all ages through arts education. For example, since November 2015, Mrs. Hogan has served as the Honorary Chair of the Council for Arts and Culture at the University of Maryland, Baltimore, working with the University and Baltimore City to promote the arts.

In 2016, Mrs. Hogan received the Inspirational Leader Award from the International Leadership Foundation, which recognized her as a trailblazing political and community leader and a role model to the Asian-Pacific American community and all Americans. Mrs. Hogan is also the recipient of the 2017 Ellis Island Medal of Honor, a highly-prestigious, nationally-recognized award by the National Ethnic Coalition of Organizations, which recognizes her accomplishments in leadership and inspired service to the state and nation; all while maintaining the traditions of their ethnic heritage as they uphold the ideals and spirit of America.

## **Barbara Harrison, Emcee**

Barbara Harrison has been a treasured Washington journalist for more than 35 years. In the fall of 1981, she joined the staff at WRC/NBC4 in Washington. Harrison has covered everything from politics to performing arts and from crime to the plight of abused and abandoned children. Her exclusive interviews with presidents, first ladies, politicians, celebrities and athletes have established her as one of Washington's most inventive interviewers.

In addition to the many EMMYs and countless other awards for reporting, the Washington Chapter of the National Academy of Television Arts and Sciences honored Harrison with The Ted Yates Award for outstanding community service. She is also the recipient of the prestigious Tufty Award for outstanding journalism from the Washington area chapter of American Women in Radio and Television.

## **Glen Echo Park's Spanish Ballroom**

Glen Echo Park's historic Spanish Ballroom is a beautifully restored Mediterranean-style Art Deco building constructed in 1933 and designed by Edward Schoeppe of Philadelphia. Historically, the ballroom hosted big name bands of the 1930s and 1940s, including Tommy Dorsey, Lawrence Welk, and others. Listed on the National Register of Historic Places, it is considered one of the best dance halls on the East Coast.

In collaboration with the National Park Service (the property owner) and Montgomery County (our operational partner), the Glen Echo Park Partnership preserves and maintains this historic structure, both inside and out. The facility was renovated as part of a \$23 million Glen Echo Park capital project funded by Montgomery County, the state of Maryland, and the federal government (through NPS), and it reopened in 2003 after a \$5 million restoration.

Today the Spanish Ballroom hosts a variety of dance events and lessons throughout the year. Dance styles include swing, contra, waltz, tango, salsa, Cajun/zydeco, and others. The Park's social dance program attracts 50,000 dancers every year and features live music performed primarily by local and regional bands.



The Spanish Ballroom structure was built on the site of an earlier dance pavilion called the Crystal Ballroom. The entire building - made of concrete, stucco, and steel construction - was originally designed to accommodate 1,800 dancers. Under today's modern building codes, the ballroom has a capacity of 870.

Upcoming projects for the Spanish Ballroom include preservation and painting of the exterior stucco and installation of LED lighting and a new light board in the main ballroom dance floor and stage area. Interior decorative painting will be commissioned next year as well. Ballroom preservation and restoration projects require the use of vendors who specialize in historic structures. The cost of this work will exceed \$80,000.

Tonight we hope to raise a portion of these funds to be placed in the *Spanish Ballroom Preservation Fund* during the "Fund-a-Need" portion of the evening.

---

### **Dignitaries in Attendance**

Ambassador Constance Morella

Maryland State Senator Susan Lee

Maryland State Delegate Marc Korman

Montgomery County Executive Isiah Leggett

Montgomery County Councilmember Roger Berliner

Montgomery County Councilmember Marc Elrich

Montgomery County Councilmember Sidney Katz

Montgomery County Councilmember George Leventhal

Montgomery County Councilmember Hans Riemer

Town of Glen Echo Former Mayor Deborah M. Beers

Town of Glen Echo Councilmember Dia Costello

Town of Glen Echo Councilwoman Nancy Long

Honorable Doug Duncan

Honorable Peter Fosselman

## **Board of Directors**

Rachelle Cherol, President\*

Edward S. Geier, Vice President\*

Julie McLean, Treasurer\*

Bob Reaves, Secretary\*

Deborah M. Beers  
Adrienne Dominguez\*  
Jennifer A. English\*  
Philip Fabrizio  
Chris Fromboluti\*  
Dan Hanlon  
Andi Hedberg  
Les Mardiks\*

Mara Mayor  
Martha Morris\*  
Eric Nelson\*  
Ana M. Rasmussen\*  
Heidi Schadler  
Genevieve Twomey  
Mike Zangwill\*

### **Ex-Officio Members**

Hon. Roger Berliner

Kenneth B. J. Hartman

\*Gala Host Committee

---

## **Partnership Staff**

Katey Boerner, Executive Director

Meredith Forster, Education Program Manager

Debbie Mueller, Director of Development

Emily Mah Rogers, Site Operations Manager

Cheryl Fuller, Business Manager

Jenni Cloud, Marketing and Communications Director

Janice Fischer, Registrar

Leah Franklin, Rentals Associate

Reuven Eitan, Dance and Special Events Manager

Kim Cuthbert, Programs and Registration Assistant

Allison Mah, Exhibitions and Marketing Assistant

William Lee, Maintenance Assistant

Lisa Fahlstrom, Bert Kenyon, Carousel Staff

Judie Gray, Marlene McConnell, Sharis Simonian, Assistant Registrars

## Thank You to Our Generous Sponsors

### **Benefactors (\$5,000 and above)**

Anonymous  
GEICO  
Occasions Caterers\*  
Robert and Rita Reaves

### **Patrons (\$2,500-\$4,999)**

Cynthia and Jeff Forster  
Glenstone Foundation  
Heidi and Bill Maloni  
Susan and Edward O'Connell  
Ratner Companies  
Synaptitude Consulting  
Jim and Carol Trawick  
Foundation  
Betsy Paull and Brian Yates

### **Table Sponsors (\$2,000)**

Bannockburn Civic  
Association  
Cabin John Community  
Adrienne Dominguez  
Folklore Society of Greater  
Washington  
Friday Night Dancers  
Friends of the Yellow Barn  
Studio  
Carol Sue and  
Christopher Fromboluti  
Elisa and Ted Geier

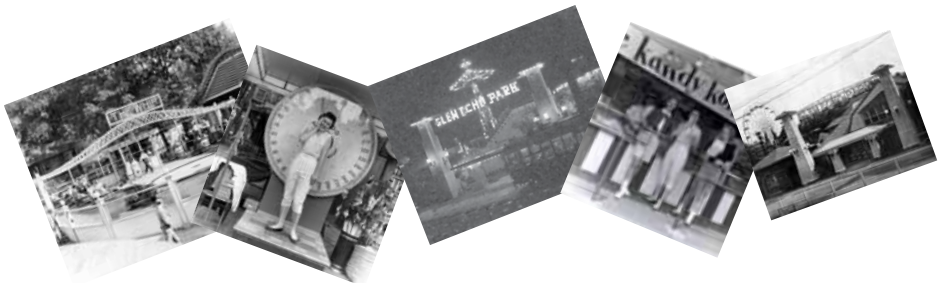
Glen Echo Pottery  
Rachelle Cherol and  
Eliot Goldstein  
Ana and Jack Rasmussen  
Jennifer English and  
Stuart Rosenbaum  
Martha Morris and  
Joe Shannon  
Town of Glen Echo  
Waltz Time

### **Sponsors (\$1,500-\$2,499)**

Stuart Barkley  
Bethesda Communications  
Group\*  
Cole Birches Foundation  
Lois Ireland and  
Pierre Huggins  
Total Wine & More\*  
United Bank

### **Friends (\$1,000-\$1,499)**

Case Design/Remodeling, Inc.  
Trish and Tony Glowacki  
Jewell Foundation Limited  
Natelli Communities  
Odin, Feldman & Pittleman  
Urban Alarm\*  
Karen Wilson



## **Contributors (\$500-\$999)**

Adeptus Partners, LLC  
AMR Commercial, LLC  
Edward Sharp and  
Roslyn Bacon  
Rosemarie and  
Thomas Francis Barrett III  
Donald, Deborah, and  
Emily Beers  
Deb Jung and Ben Bialek  
Katey Boerner  
Michael and Maria Burack  
Congressional Bank  
Harriett Crosby  
Peter and Charlotte Dean  
EagleBank  
Edmonds Optician  
Harley J. Frazis  
Hon. Bill and Bethany Frick  
Lee and Michael Gough  
Anya Grundmann  
Hilton\*  
Angela and Aaron Hirsch  
The Irish Inn at Glen Echo  
It's My Party, Inc.\*  
Patricia J. Judy  
Craig and Nancy Katz  
Kenwood Golf and  
Country Club\*  
Law & Associates, Inc.  
Carol Leahy  
Richard Leggin Architects, P.C.\*  
Lettuce Entertain You  
Restaurants\*  
Long & Foster Bethesda  
Gateway Office  
Mara and Bruce Mayor  
Jan and Charles McNamara

OLS  
Photoworks  
the Puppet Co.  
Revere Bank  
Steven Satterfield  
David M. Schwartz Architects  
Charitable Foundation  
Geza Serenyi  
SmithGroupJJR  
Cam Crockett and  
Lafe Solomon  
Southwest Airlines\*  
Stacey Galik and  
Steven Strawn  
Catherine G. Titus  
Katherine and Bradley Vogt  
Walt Disney World\*  
Washington Conservatory of  
Music  
Catherine Seibert and  
Fred Wright

## **Supporters (\$250-\$499)**

Ernie Abbott  
Emily Parsons and  
Thom Amdur  
Associated Insurance  
Management, Inc.  
Barnes & Noble Bethesda\*  
Bernstein Management  
Corporation  
John Britton  
Chevy Chase Acura  
Coakley & Williams  
Construction, Inc.  
Elizabeth Lee and Jim Cole  
Ann Pelham and Bob Cullen

Susan Cummins  
John W. Dix  
Phil and Denise Fabrizio  
Friendship Hospital for Animals  
Tom Gallagher  
Glen Echo Hardware  
Greenstone Landscape, Inc.  
Guardian Fire Protection Services, LLC  
H Plumbing, Inc.  
Honest Tea\*  
Hyatt Regency Bethesda\*  
Patty Howie  
Constance Karageorgis  
Sara Morningstar and Philip Katz  
Linda Kelly  
The Kreeger Museum\*  
Liberty Lock and Security  
Manley Enterprises, Inc.  
Lily and Pat McGovern  
Mercersburg Printing\*  
NTL Technology Leasing Services Inc.\*

Nat and Melissa Polito  
Prompt Services  
Robin Rinearson  
Carol Hurwitch and Jon Robinson  
Royal Traveler\*  
Sal's Italian Kitchen  
Marc A. Shepanek  
Mickie Simpson, TTR Sotheby's  
International Realty  
Scott Smith  
Soul Cycle\*  
Genevieve and Sean Twomey  
Vamoose Bus\*  
Becky Chasan and  
Eric Van Buskirk  
Leigh Warner  
Wild Tomato  
Gail and Riley Williams  
Beth Curren and Dwain Winters  
Jennifer and Dudley Winthrop  
The Young Creative Spirit

*Sponsors as of May 12, 2017*

*\*In-kind sponsors*





# GLEN ECHO PARK

Glen Echo Park Partnership for Arts and Culture

## About the Glen Echo Park Partnership

The Glen Echo Park Partnership for Arts and Culture, Inc. manages one of the most lively visual and performing arts sites in the Washington area. Each year, more than 375,000 people come together at Glen Echo Park to renew their creative spirit through arts classes, festivals, exhibitions, social dances, children's theater, music performances, environmental education programs, and more.

Established by Montgomery County in 2002, the Partnership is a nonprofit organization dedicated to managing Glen Echo Park's programs and facilities. Its mission is to present vibrant artistic, cultural, and educational offerings at the Park and to promote the Park as a unique destination for the region's diverse population.

In collaboration with Montgomery County and the National Park Service, the Partnership works with resident artists and organizations to develop distinctive arts programming. The Partnership also operates the historic Dentzel carousel, presents an extensive social dance program, produces festivals and special events, conducts fundraising and marketing, and manages and maintains all of the Park's facilities.

---

Visionary Award courtesy of Blair Anderson, SilverWorks Studio & Gallery

Program cover and design generously provided by Deborah Lange,  
Bethesda Communications Group

Thanks to Jeff Krulik for providing *All For Fun, Fun For All* - a short film by  
George Merriken, 1940

Also, thank you to Richard Cook for providing photos of historic Glen Echo Park

The Glen Echo Park Partnership for Arts and Culture, Inc. is funded by an operating grant from the Maryland State Arts Council, an agency dedicated to cultivating a vibrant cultural community where the arts thrive, and also by funding from the Montgomery County government and the Arts and Humanities Council of Montgomery County. In addition, individual, foundation, and corporate donors generously support the Partnership. All programs are produced in cooperation with the National Park Service and Montgomery County, Maryland.

# Resident Artists and Organizations at Glen Echo Park

## **Adventure Theatre MTC**

children's theater productions and education programs

## **Art Glass Center at Glen Echo**

fused glass studio and gallery

## **Glen Echo Glassworks**

blown glass studio and gallery

## **Glen Echo Park Aquarium**

a Chesapeake Bay discovery center

## **Glen Echo Pottery**

pottery studio and gallery

## **J. Jordan Bruns Studio**

painting and drawing studio

## **Photoworks**

digital and darkroom photography studio and gallery

## **PGiP**

Playgroup in the Park early childhood programs

## **the Puppet Co.**

children's puppet shows and education programs

## **Sculpture Studio**

a stone carving and sculpture studio

## **SilverWorks Studio & Gallery**

silversmithing studio and gallery

## **Washington Conservatory of Music at Glen Echo Park**

music instruction, ensembles, and performances

## **Yellow Barn Studio & Gallery**

painting and drawing studio and gallery

## **Young Creative Spirit**

children's fine art studio

## **Program Partners**

American Swing Music and Dance Association - Capital Blues  
Culkin School of Traditional Irish Dance  
Dana Tai Soon Burgess Dance Company - Dancing by the Bayou  
DC Lindy Exchange - Flying Feet Enterprises  
Folklore Society of Greater Washington - Forever Dancing  
Friday Night Dancers - High Energy Productions - The Jam Cellar  
Metropolitan Ballet Theatre & Academy - National Enamelist Guild  
Tango Brillante DC - The Tom Cunningham Orchestra  
Waltz Time - Wonder Kids - The Writer's Center  
and many other individual artists and arts partners

## **Other Programs and Activities at the Park**

**Visual and Performing Arts Classes and Summer Camps** - sculpture, clay animation, arts and crafts, book and paper arts, dance and movement, and other disciplines

**Social Dances and Classes** - in the Spanish Ballroom, Ballroom Back Room, and Bumper Car Pavilion co-produced by the Partnership and a host of presenters

**Festivals** - Carousel Day, Washington Folk Festival, Then and Wow, and more

**Summer Concert Series** - Thursday evenings in the Bumper Car Pavilion from June through August

**Art Exhibitions** - in the Popcorn Gallery, Stone Tower Gallery, Park View Gallery, and other venues throughout the year

**Art Walk in the Park** - Artist demonstrations and exhibitions in visual arts studios and galleries, first Fridays May through September

**Park History Tours and Programs** - in cooperation with the National Park Service

**Dentzel Carousel** - open May through September

**Children and Family Activities** - Drop-in arts activities and birthday parties

**Playground and Picnic Area** - open year round



The Glen Echo Park Partnership for  
Arts and Culture Offers  
Special Thanks to Our  
Major Corporate Sponsors

**GEICO**<sup>®</sup>  
**geico.com**

O C C A S I O N S



C A T E R E R S



THE KREEGER MUSEUM



## *RE-VISION:*

Looking Anew at the Art of Philip Johnson  
And the Design of The Kreeger Museum

Featuring photography by Cynthia Connolly,  
Frank Hallam Day, Avi Gupta, Max Hirshfeld,  
Franz Jantzen, and Colin Winterbottom.

***On view until July 29***

[www.kreegermuseum.org](http://www.kreegermuseum.org)

**Facebook:** The Kreeger Museum

**Twitter | IG:** @kreegermuseum

2401 Foxhall Road NW | Washington, DC 20007

# PHOTOWORKS

At Glen Echo Park

40+ YEARS IN FOCUS.



- Digital and film photography classes and workshops.
- Exhibits & gallery talks.
- Open darkroom & digital lab.
- Join our community of photographers.

PHOTOWORKS PHOTOGRAPHY SCHOOL & GALLERY

7300 MacArthur Boulevard

Glen Echo, MD 20812

301.634.2274 | [www.glenechophotoworks.org](http://www.glenechophotoworks.org)



# GLEN ECHO POTTERY

# 2017

MAY 5—MAY 29

## VESSELS GREAT AND SMALL



Spring Ceramics Exhibit  
in the Popcorn Gallery  
Open this Evening

Classes all Levels  
Generous Open Studio Time

Jeff Kirk, Executive Director and Resident Artist  
301-229-5585 • [www.glenechopottery.com](http://www.glenechopottery.com)



Walter Bartman, Founder and resident artist

The Friends' philosophy, consistent with the spirit of the late 19th Century Chautauqua movement upon which Glen Echo Park was founded, is that art is universal and thus should be accessible to all. The Friends' goal is to encourage all area residents of all ages and all means to experience the wonder of the visual arts, through Drawing and Painting.



[yellowbarnstudio.com](http://yellowbarnstudio.com)



## Salutes YUMI HOGAN

For her support of the Arts

As Glen Echo Park  
celebrates its Gala,  
the Puppet Co. is  
having a Ball!

# Cinderella

Now through June 11

A Center for Exploration of the Puppet Arts  
**the Puppet Co.**

Glen Echo Park • 7300 MacArthur Blvd., Glen Echo, MD 20812  
[www.thepuppetco.org](http://www.thepuppetco.org) • (301) 634-5380



## The Young Creative Spirit

Let your  
imagination soar!

Afterschool Classes  
Fine Art and Studio Camps  
Parent and Child Classes  
and Workshops

[www.youncreativespirit.org](http://www.youncreativespirit.org)  
301.980.1538

## BARNES & NOBLE



Barnes & Noble Bethesda is  
pleased to support the arts  
and education programs at  
Glen Echo Park

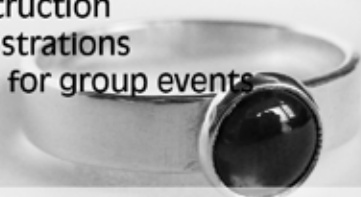
[www.barnesandnoble.com](http://www.barnesandnoble.com)

# SilverWorks

studio gallery at glen echo park

## in the studio

- 5 week classes in silversmithing
- one day workshops
- open studio rental
- private instruction
- live demonstrations
- workshops for group events



## in the gallery

- ongoing shows of new work
- original jewelry creations for sale

[www.silverworksglenechopark.com](http://www.silverworksglenechopark.com)



## Music Lessons

### for All Ages

Lessons • Classes • Camps  
Ensembles • Concerts  
Suzuki String Academy

**More than 25 areas of music study...**  
voice, piano, guitar, percussion, strings,  
winds, brass, folk & traditional Irish, theory,  
composition, conducting, early childhood

  
**Washington**  
Conservatory & Music

*Nationally Accredited Community Music School*

Glen Echo Park & Westmoreland Circle  
[www.washingtonconservatory.org](http://www.washingtonconservatory.org)  
(301) 320-2770

# Waltz Time at Glen Echo Park

Sunday Afternoon Waltzes in the Spanish Ballroom  
Lesson and Dancing to Live Music

Since 1995 **Waltz Time**, an all-volunteer group of dancers, has produced the twice-monthly Sunday afternoon waltzes and the annual "Evening with Strauss Waltz Ball" at Glen Echo Park.

Each Sunday afternoon dance includes a beginning waltz lesson from 2:45 - 3:30 pm, followed by dancing until 6:00 pm to live music by renowned local and national bands. We invite you to join this lively community of waltzers. We know that you will have a great time!

## 2017 Waltz Schedule

May 28:	Swallowtail
June 11:	Go Figure
June 25:	Green Light Karma
July 9:	Valse Impressions
July 23:	Trio
Aug. 6:	Cabaret Sauvignon
Aug. 20:	Waltz du Jour
Sep. 3:	Waltzing Stars Trio
Sep. 17:	Taylor Among the Devils
Oct. 8:	Addison Bleufonte
Oct. 22:	Blue Bamboo
Nov. 5:	Terpsichore
Nov. 19:	Sugar Beat
Dec. 3:	Rhapsody
Dec. 17:	Notorious Folk



[www.waltztimedances.org](http://www.waltztimedances.org)

## CONTRA DANCING

Wonderful live music  
Come alone or with friends  
Alcohol- and smoke-free



Friday  
Night  
Dancers

All dances taught and prompted  
No experience necessary  
Casual dress  
Wear comfortable shoes

**What:** Contra dancing is an American form of traditional social dance related to square dancing. It's fun, friendly, energetic, and easy to learn!

**Where:** Glen Echo Park – Spanish Ballroom

**When:** Every Friday night, **8:30 to 11:30 p.m.** *New dancer lesson at 7:30 p.m.*

**Cost:** Admission (*includes lesson*): **\$10** for adults, **\$5** for age 17 & under.

*Free admission for 17 & under on the second Friday of every month.*

*New dancers get free admission coupon for their next dance.*

**Questions?** Go to [www.fridaynightdance.org](http://www.fridaynightdance.org) and **Friday Night Dance at Glen Echo Park** on Facebook, write to [info@fridaynightdance.org](mailto:info@fridaynightdance.org) or phone GEPPAC at (301) 634-2222.

Sponsored by The Friday Night Dancers in cooperation with GEPPAC,  
the National Park Service, and Montgomery County

## EVERY FRIDAY NIGHT



**RATNER<sup>®</sup>**  
**COMPANIES**

where it's all about the people.™

*Proudly Supporting*

Glen Echo Park Partnership  
for Arts and Culture's

# Gala in the Park

hair cuttery

BUBBLES

Salon Cielo

cibu

SALON PLAZA<sup>®</sup>

*The* folklore Society  
of Greater Washington



*Furthering the understanding,  
investigation, appreciation,  
performance, and enjoyment of  
traditional folk music, dancing and  
storytelling of the American people*

- Join us for concerts, dances, festivals, getaways, open sings, jams, storytelling events, and more
- Read all about DC-area folklore news in the FSGW monthly newsletter and weekly e-mail blasts
- Enjoy the FSGW contra dances every Sunday at Glen Echo Park, 7:30 to 10:30 pm, with free lesson at 7pm

**37<sup>th</sup> Washington Folk Festival, June 3 & 4, 2017**

[www.fsgw.org](http://www.fsgw.org)

[www.facebook.com/DCFolklore/](https://www.facebook.com/DCFolklore/)

O C C A S I O N S



C A T E R E R S

OCCASIONSCATERERS.COM

202.546.7400

---

OCCASIONS CATERERS IS PROUD TO  
SUPPORT GLEN ECHO PARK AND  
THE CAROUSEL MEMORIES  
GALA IN THE PARK



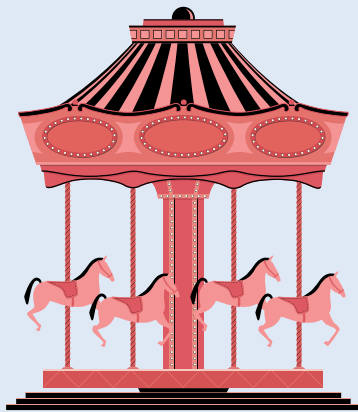
# **GEICO®**

**is honored to support**

Glen Echo Park Partnership  
for Arts and Culture

**2017 Gala in the Park  
Celebrate History in Our Backyard**

**Congratulations to the Honorees  
First Lady Yumi Hogan  
Town of Glen Echo  
Richard Cook**



# **GEICO®**

GEICO PHILANTHROPIC FOUNDATION

GEICO is a registered service mark of Government Employees Insurance Company, Washington, D.C. 20076; a Berkshire Hathaway Inc. subsidiary. GEICO Gecko image © 1999-2017. © 2017 GEICO

**CONGRATULATIONS!**  
**Honoree Yumi Hogan**  
**First Lady of Maryland**

2017 Glen Echo Visionary Award Recipient

*Thank you for all your work to  
encourage young artists in our  
Maryland schools.*

J I M   A N D   C A R O L  
**TRAWICK**  
F O U N D A T I O N

**Total**  **Wine®**  
**& MORE**

★ 4-TIME ★  
NATIONAL  
RETAILER OF  
THE YEAR

**Total Wine & More proudly supports  
the Glen Echo Park Partnership  
for Arts and Culture**

**LAUREL**

**Corridor Marketplace**  
3335 Corridor Marketplace  
Laurel, MD 20724  
301-617-8507

**McLEAN**

**McLean Shopping Center**  
1451 Chain Bridge Road  
McLean, VA 22101  
703-749-0011



Get Social With Us  
**TotalWine.com**

*Corridor Fine Wine is independently owned and operated.*

# The Intersection of Business and Technology

Synaptitude delivers transformational solutions across the intersection of business and technology to the most recognized names in global business.

- ▶ Transformative Solutions for Business Operations
- ▶ Transformative Solutions for Finance, Billing, and Revenue Assurance
- ▶ Transformative Solutions for Information Technology

**Synaptitude**  
CONSULTING

[www.SynaptitudeConsulting.com](http://www.SynaptitudeConsulting.com)

## UNITED BANK IS PROUD TO SUPPORT THE ARTS AT GLEN ECHO PARK

We stand behind the arts and stand united with your financial goals. Let us know how we can help you grow today.

 **UNITED BANK**  
THE COMMUNITY BANK OF THE NATION'S CAPITAL

[BankWithUnited.com](http://BankWithUnited.com)  
Member FDIC

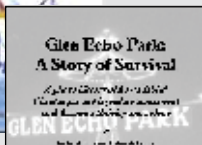
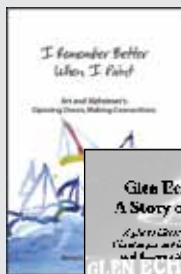
*Congratulations to the  
Glen Echo Park Partnership  
on the 2017 Gala!*

Bethesda  
Communications  
Group



Publishers of Books,  
Brochures, and Films

See our books in the Popcorn Gallery.  
[www.bcgpub.com](http://www.bcgpub.com)



**Pleased to provide peace of mind and security  
for Glen Echo Park Partnership**



**URBAN  
ALARM**  
TOTAL PEACE OF MIND

[www.urbanalarm.com](http://www.urbanalarm.com)

Security and Fire Alarm • Video • Access Control • Mobile Patrol

**The Bannockburn Civic Association  
is Proud to Sponsor  
The GEPPAC Gala 2017**

**Bannockburn:  
Less a Place  
than a  
State of Mind**

**[www.bannockburncommunity.org](http://www.bannockburncommunity.org)**



**Natelli Communities Brings You  
Bethany's Best Selling Community**

**BayForest**  
*at Bethany Beach*

**NVHOMES**

Single Family Homes from \$337,990

Villas from \$279,900

**302.539.2128**

**MAIN STREET HOMES**

Lake Front Single Family Homes

From \$413,900

**302.539.6278**



**[www.BayForestBeach.com](http://www.BayForestBeach.com)**



ODIN, FELDMAN & PITTLEMAN, P.C.

IS PROUD TO SUPPORT

THE GLEN ECHO GALA IN THE PARK

Odin  
Feldman  
Pittleman PC

SERVING BUSINESSES AND FAMILIES IN NORTHERN VIRGINIA SINCE 1972.

1775 WIEHLE AVE., SUITE 400, RESTON, VA 20190 | WWW.OFPLAW.COM | 703-218-2100



**Adeptus Partners, LLC**

Accountants | Advisors

3311 Olney Sandy Spring Road

Olney, Maryland 20832

Phone: 301.929.9700

Fax: 301.929.9701

[www.AdeptusCPAs.com](http://www.AdeptusCPAs.com)

**Adeptus Partners, LLC** is a proud sponsor of  
Glen Echo Park Partnership for Arts and Culture.

Our experienced accounting, tax and consulting professionals are committed to supporting your business and financial objectives with quality service and responsiveness that will exceed your expectations.

**SERVICES:** Tax Planning & Preparation • QuickBooks Set-up, Consulting & Training • Audits, Reviews & Compilations • Monthly Reporting Services • Consulting in Purchase or Sale of Business  
• Estate & Succession Structure & Planning • Restaurant, Real Estate & Retail Specialists

# CASE IS PROUD TO SUPPORT OUR NEIGHBOR GLEN ECHO PARK.

Since 1961, Case has designed and built more of the finest kitchens, bathrooms, additions, and interior spaces than any other local remodeler. Our entire focus is turning dreams into reality. Let us help you get started today. Visit [casedesign.com](http://casedesign.com) or call 301.229.4600 to explore the possibilities.

Visit our Bethesda Design Studio located at The Shops at Summer Place



ADDITIONS | BATHS | CONDOS | EXTERIORS | KITCHENS

Proud Supporter of the  
2017  
*History in Our Backyard Gala*  
and the Glen Echo Park  
Partnership  
for Arts and Culture

**LONG & FOSTER**  
REAL ESTATE



Rachelle Cherol  
301.379.5013 C | 301.907.7600 O  
[rachelle.cherol@LNF.com](mailto:rachelle.cherol@LNF.com)  
Bethesda Gateway Office  
Over \$1 Billion in Annual Sales





is honored to support the 2017 Glen Echo Gala in the Park.

Congressional Bank has been serving the local community for over 10 years.  
Contact us today for exceptional service, great deposit accounts,  
commercial loans and residential mortgages.

(301) 299-8810 or [customerservice@congressionalbank.com](mailto:customerservice@congressionalbank.com)

Please visit our website at [www.congressionalbank.com](http://www.congressionalbank.com)

to find a branch near you.



NMLS ID #652644

# MoCo LOCAL

**SAL'S Italian Kitchen**

&  *Wild tomato*

*Are Wild about  
ART in The Park*

7945 MacArthur Blvd.

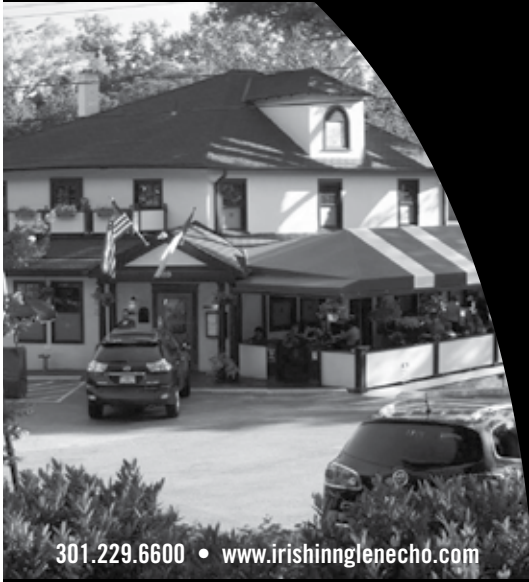
301.299.0680

[www.wildtomatorestaurant.com](http://www.wildtomatorestaurant.com)

240.802.2370

[www.salsitaliankitchen.net](http://www.salsitaliankitchen.net)





301.229.6600 • [www.irishinnglenecho.com](http://www.irishinnglenecho.com)

the irish inn  
  
fine dining  
at glen echo

live music

mondays - traditional irish  
7 pm - 10 pm

every other wednesday  
19<sup>th</sup> street band  
8 pm - 11 pm

sundays - jazz  
5:30 pm - 8:30 pm

6119 Calane Ave. Glen Echo  
Maryland 20812

stella barra  
PIZZERIA



**WEEKEND BRUNCH**  
SAT / SUN 11AM - 3PM

(301) 770-8609

*Kids Can Make Their Own  
Pizzas With Our Chefs!*

SUMMER  
HOUSE  
SANTA MONICA



**WEEKEND BRUNCH**  
SAT / SUN 8AM - 3PM

(301) 881-2381

*Kids Menus Available!*

— PIKE & ROSE —  
11825 GRAND PARK AVE  
NORTH BETHESDA, MD 20852

COMPLIMENTARY  
**BREAKFAST PASTRY**  
FROM THE MARKET



PEOPLE FIRST.

**Bernstein Management Corporation** is a regional leader in real estate management, investment and development. We own and manage an investment portfolio of 93+ properties including 3.8 million square feet of commercial space, and over 6,000 apartments in Washington, D.C., Maryland, and Virginia.

It all started back in 1953 with Norman Bernstein. He had this crazy idea to build a real estate management company that puts **people first**. He believed integrity should be at the core of everything we do - and we're proud to say, six decades later, it still is. As we evolve and grow, we'll continue to make good decisions that benefit our **residents, employees, investors, brokers, and our communities**. What's important to you is important to us: financial strength and stability, steadfast leadership, long-term investments in desirable locations, exceptional and uncommon service, innovation, and fresh experiences. We're people who do our best to make your life more incredible.



O P T I C I A N

A Tradition of Excellence Since 1898  
Specializing in children and adult eye care

The Shops at Sumner Place  
4611-B Sangamore Road  
Bethesda, MD 20816

301-229-3775  
[www.edmondsoptician.com](http://www.edmondsoptician.com)

We applaud the Glen Echo Park Partnership  
for Arts & Culture for their stewardship  
of this important regional asset



DAVID M. SCHWARZ ARCHITECTS

[www.dmsas.com](http://www.dmsas.com)

THE AMERICAN UNIVERSITY MUSEUM AT THE KATZEN ARTS CENTER  
*proudly support our friends at*  
THE GLEN ECHO GALA IN THE PARK

New exhibitions  
June 17 6-9 pm  
featuring

Carl De Keyzer  
Val Lewton  
Frederic Kellogg  
Foon Sham  
Susana Raab  
Jenny Wu  
Clay Dunklin  
Amy Lin  
Street Light Circus



*States of Being: North Korea and Cuba by Carl De Keyzer*



AMERICAN UNIVERSITY MUSEUM  
COLLEGE OF ARTS & SCIENCES

[www.american.edu/museum](http://www.american.edu/museum)

# REVERE BANK

Proudly Supports the  
**2017 Glen Echo Park Gala**

Revere Bank applauds the efforts of Glen Echo Park as a vibrant cultural resource in the Washington, DC area.

As a leading community bank, we make a difference to the communities where we live and work.



**301.841.9600**  
[www.reverebank.com](http://www.reverebank.com)

COMMITTED TO YOUR SUCCESS

Member FDIC  
NMLS ID #523195



ALEXANDER, MONTROSE, RITTENBERG  
Commercial Real Estate Brokerage  
Est. 1994

**PROUDLY SUPPORTS GEPPAC  
AND THE  
2017 GALA IN THE PARK**

For all your commercial real estate needs,  
call Jack Alexander

**301.961.9696**

AMR COMMERCIAL, LLC.

[www.amrcommercial.com](http://www.amrcommercial.com)

[jalexander@amrcommercial.com](mailto:jalexander@amrcommercial.com)

4849 Rugby Avenue ♦ Suite 200

Bethesda, Maryland 20814

301.961.9696 ♦ Fax 301.656.7551

*Celebrating*  
**23**  
*Years*  
1994-2017

A Member of **COF**  
CREDIT ORGANIZATION

SHULMAN  
ROGERS

GANDAL  
PORDY  
ECKER

*Proud to Volunteer as General Counsel to  
Glen Echo Park Partnership  
for Arts and Culture*

**Jeffrey S. Holik**

**Larry A. Shulman**

Shulman, Rogers, Gandal, Pordy & Ecker, P.A.  
12505 Park Potomac Avenue  
Potomac, Maryland 20854

301-230-5200

[ShulmanRogers.com](http://ShulmanRogers.com)



RICHARD  
LEGGIN  
ARCHITECTS



301-320-0107

[RLArchs.com](http://RLArchs.com)



Proud supporter of the  
Glen Echo Park  
Partnership for Arts and  
Culture.

# Hilton



CONRAD  
HOTELS & RESORTS™

canopy  
BY HILTON



CURIO  
A COLLECTION BY HILTON™



TAPESTRY  
COLLECTION  
BY HILTON™



## Hilton HONORS



Merriweather Post Pavilion • Columbia, MD

JUST ANNOUNCED!



**SAVE \$100 - HAPPY BIRTHDAY, INDEED!!!**  
GO TO ALL FOUR SHOWS • GET THE SAME TICKET TYPE  
TAKE \$100 OFF THE TOTAL!!!  
**PAUL SIMON • STEVE MILLER BAND**  
**50TH ANNIVERSARY CONCERT • SANTANA**



Share the bargain with friends...tickets can be used by the purchaser or split up!

For more info, visit [merriweathermusic.com](http://merriweathermusic.com)

### MERRIWEATHER 50TH ANNIVERSARY CONCERT FEATURING **Jackson Browne and Willie Nelson**

w/ Father John Misty plus special guest host Grace Potter *Talkin' & Singin'...* JULY 15

**Bon Iver** w/ Hiss Golden Messenger ..... MAY 24

I.M.P. & GOLDENVOICE PRESENT AN EVENING WITH

**Sigur Rós**..... MAY 25

**The Chainsmokers** w/ Kiiara, Lost Frequencies, featuring Emily Warren ..... MAY 26

CAPITAL JAZZ FEST FEATURING


**CORINNE BAILEY RAE • GEORGE BENSON • JAHEIM • ANTHONY HAMILTON** and more!.... JUNE 2-4

**Paul Simon** w/ Sarah McLachlan..... JUNE 9

**Jack Johnson** w/ Lake Street Dive..... JUNE 11

**John Legend** w/ Gallant..... JUNE 20

**TICKETFLY** • For full lineups and more info, visit [merriweathermusic.com](http://merriweathermusic.com)




Museum of the Bible  
Washington, DC  
Opening November 2017

Museums • Archives & Collections Care  
Visitor Centers • Performing Arts  
Cultural Districts & Master Planning

**SMITHGROUP JJR**

[www.smithgroupjjr.com](http://www.smithgroupjjr.com)

There is so much to do at  
Glen Echo Park. We love it here.



Dance • Exhibits  
Children's Theater • Art  
Festivals • Concerts  
Spanish Ballroom  
History • Carousel

 **EAGLEBANK**  
MD | DC | VA | 301.986.1800  
[www.EagleBankCorp.com](http://www.EagleBankCorp.com)

  
EQUAL HOUSING  
LENDER  
Member FDIC

**Law & Associates Inc.**  
*Independent Registered Investment Advisor*



***Wealth Management & Financial Planning***

(301)229-8500

Heather Cottage  
6111 Tulane Avenue  
Glen Echo Maryland 20812-1205  
[www.lawandassociates.com](http://www.lawandassociates.com)

Investment Advisory Services offered through Law & Associates, Inc.  
and Raymond James Financial Services Advisors, Inc.  
Law & Associates, Inc. is not a registered broker/dealer and is independent of  
Raymond James Financial Services.  
Member FINRA/SIPC



Serving Glen Echo and  
Surrounding Areas

Service Repairs and  
Installations

Remodeling Work

Gas Fitting & Backflow  
Certified



**301-253-1133**  
[www.hplumbinginc.com](http://www.hplumbinginc.com)



**1205 Taft Street  
Rockville, MD 20850**

- **Locks**
- **Safes**
- **Door Hardware**
- **For Home and Office**

**301-424-5625**  
[www.liblock.com](http://www.liblock.com)





**OFFICE LIQUIDATION SOLUTIONS  
& DECOMMISSIONING SPECIALISTS**

SCOTT CORNBLATT - PRESIDENT

301-296-3104    SCOTTC@OLSGOGREEN.COM  
WWW.OLSGOGREEN.COM

367 MAIN STREET SUITE 200,  
GAITHERSBURG, MD 20878



**YOUR FRIENDLY NEIGHBORHOOD LIQUIDATOR**



**QUALITY CRAFTSMANSHIP**

Since 1973

Certified Green Remodeler on Staff

**Client Satisfaction: Our best product!**  
**For over 40 years**

Member of "Big 50"

Phone 301-370-3584  
6320 Bannockburn Dr.  
Bethesda, MD 20817  
jim@manleyenterprise.com

**2017 ACURA TLX**

**Driving memories!  
Make them yours.**



[www.ChevyChaseAcura.com](http://www.ChevyChaseAcura.com)



Legendary Transformation  
in the Heart of Bethesda

301 657 1234

[www.bethesda.regency.hyatt.com](http://www.bethesda.regency.hyatt.com)



Mercersburg  
PRINTING

- Quick Turnaround
- Friendly Service
- Professional Staff
- Fast and Reliable
- Quality Equipment

- Commercial Printing
- Digital Printing
- Mailing Services
- Graphic Design Services
- Web Design & Hosting

**800-955-3902**

**Fax: 717-328-4138**

9964 Buchanan Trail West  
Mercersburg, PA 17236

[www.mercersburg.net](http://www.mercersburg.net)  
[mprint@planetcable.net](mailto:mprint@planetcable.net)

"Someone nice will always answer!"



Daily luxury motor coach  
transportation between  
New York City  
and  
Bethesda, MD  
Arlington, VA  
Lorton, VA



[www.VamooseBus.com](http://www.VamooseBus.com)

**COAKLEY  
WILLIAMS  
CONSTRUCTION**

**COAKLEY & WILLIAMS  
CONSTRUCTION  
PROUDLY SUPPORTS  
THE GLEN ECHO PARK  
PARTNERSHIP FOR  
ARTS & CULTURE**

# GLEN ECHO ⊕ HARDWARE

---

## POWERING YOUR PROJECT

Authorized Distributor of  
Makita • Paslode • Fein  
Benjamin Moore Paints

7303 MacArthur Blvd.  
Bethesda, MD 20816  
301-229-3700

[www.glenechohardware.com](http://www.glenechohardware.com)



## MICKIE SIMPSON

*Glen Echo resident &  
real estate professional*

Proud to support the wonderful  
Glen Echo Park Partnership!

[msimpson@ttrsir.com](mailto:msimpson@ttrsir.com)  
202.906.9865

TTR | Sotheby's  
INTERNATIONAL REALTY

301.967.3344 [www.ttrsir.com](http://www.ttrsir.com)



## NTL Technology Leasing National AudioVisual & Technology Rentals

Affordable Technology Rental Solutions for Any Event

AudioVisual - Computers - Lighting - Printers - Copiers  
MacBook Pros - iPads - Audience Response  
LED/Touchscreen Monitors - LED/Smart Televisions  
Cameras - Sound Recording - Onsite Technicians

[nationaltechnologyrentals.com](http://nationaltechnologyrentals.com)  
1-800-738-3132

# Green STONE INC.

*Where Landscaping Dreams take Root...*

Landscape & Design,  
Installation and Maintenance



(301) 869-0100  
[www.Greenstone1.com](http://www.Greenstone1.com)



[www.soul-cycle.com](http://www.soul-cycle.com)

ART • CUSTOM • REPAIRS • IN HOME

RAINBOWNEON, INC.

TEXT- 301-989-9242 -CALL

**Broken Bar/Beer Sign?**

**Need a unique gift?**

**Store Sign need repair?**

[www.rainbowneon.com](http://www.rainbowneon.com)  
[kelly@rainbowneon.com](mailto:kelly@rainbowneon.com)

- Apparel
- Neon
- Printing
- Graphics
- Banners
- Signs



*refreshingly*  
**HONEST**  
 Real brewed, organic tea



No GMO means that if from a bioengineered source of an ingredient, we don't use it.  
 © 2016 HONEST Tea, INC. HONEST HONEST Tea and the T Design are trademarks of HONEST Tea, Inc.



Home Improvement

*Commercial and Residential*

Eddie Juarez

3 Hillcrest Drive, Suite 202-A  
 Frederick, MD 21703

Office: 301-360-0590  
 Cell: 301-536-4184

[cegellc@aol.com](mailto:cegellc@aol.com)

[www.cegehomeimprovement.com](http://www.cegehomeimprovement.com)

MHIC# 125245



# FRIENDSHIP

HOSPITAL FOR ANIMALS

Comprehensive wellness,  
emergency and specialty care



**202.363.7300**

**+24 hour urgent care**

Located in Tenleytown with  
client parking.

[www.friendshiphospital.com](http://www.friendshiphospital.com)

**ROYAL  
TRAVELER**



*Your commute just got an upgrade*

Departing & Returning twice  
daily between DC & NYC

**For Reservations  
please visit**

[www.royaltraveler.com](http://www.royaltraveler.com)

or call us at 202-590-0506



**GUARDIAN FIRE**  
**PROTECTION SERVICES**  
*Single Source / Simplicity / Peace of Mind*

**Fire Alarm – Sprinkler – Extinguisher  
Kitchen Fire Suppression**

***Inspection – Repair – Emergency***

**Servicing: MD, VA and DC**

**Ph: 301-840-7100**

[www.GuardianFireProtection.com](http://www.GuardianFireProtection.com)

**aim** >

**Associated Insurance Management**  
is a full-service, independent  
property & casualty insurance  
agency, specializing in commercial  
and residential real estate in the  
Metropolitan Washington, DC area.

**Contact: Bruce Feinman**  
240-638-4073  
[bbfeinman@aimcommercial.com](mailto:bbfeinman@aimcommercial.com)

**Associated Insurance Management, Inc.**  
1300 Spring St., Suite 300  
Silver Spring, MD 20910



# Praline at Glen Echo Park



Located Next to the Ballroom  
Now Serving Beer and Wine

Monday-Wednesday, 10am-4pm  
Thursday-Sunday, 10am-10:30pm



Every First Friday  
May - September  
6pm to 8pm



IN THE PARK

Every first Friday, May through September, the Glen Echo Park Partnership hosts open studios and artist demonstrations in the Park's many visual arts studios and galleries.

Each month features different activities.

[www.glenechopark.org/artwalk](http://www.glenechopark.org/artwalk)



GLEN ECHO PARK

2017

# SUMMER CONCERTS

Thursdays, June 15-August 31

7:30pm in the Bumper Car Pavilion

*Covered pavilion with seating. Rain or shine.*

*Bring a picnic or visit Praline at Glen Echo Park.*

**FREE Music • FREE Parking**

## JUNE

- June 15 U.S. Marine Band—Latin Jazz Ensemble
- June 22 David Cole & Main Street Blues
- June 29 Annapolis Bluegrass Coalition

## JULY

- July 6 Mike Kamuf Little Big Band
- July 13 Sweet Saludos
- July 20 Brendan Pelan and Chick Hall
- July 27 U.S. Marine Band—Free Country

## AUGUST

- August 3 Bollywood Brass DC
- August 10 Elikeh
- August 17 Origem
- August 24 U.S. Marine Band—Dixieland Ensemble
- August 31 Tall in the Saddle Band

[www.glenechopark.org](http://www.glenechopark.org) • 301-634-2222



The Partnership also thanks The Bethesda-Chevy Chase Rotary Club Foundation for their generous support of the Summer Concert Series. The Glen Echo Park Partnership for Arts and Culture, Inc. is funded by an operating grant from the Maryland State Arts Council, an agency dedicated to cultivating a vibrant cultural community where the arts thrive, and also by funding from the Montgomery County government and the Arts and Humanities Council of Montgomery County. All programs are produced in cooperation with the National Park Service and Montgomery County, Maryland.



# GLEN ECHO PARK

Glen Echo Park Partnership for Arts and Culture  
7300 MacArthur Boulevard, Glen Echo, MD 20812  
301.634.2230 • [www.glenechopark.org](http://www.glenechopark.org)

